

Palomar Commons

RI

RESTAURANT SPACE AVAILABLE | PALOMAR AIRPORT RD + EL CAMINO REAL, CARLSBAD, CA



DON MOSER • 858.523.2087 • dmoser@retailinsite.net

MATT MOSER • 858.523.2096 • mmoser@retailinsite.net

405 S. HIGHWAY 101, STE 150, SOLANA BEACH, CA 92075 • LIC # 01206760 T: 858 523 2090 • RETAILINSITE.NET

PROPERTY HIGHLIGHTS



- Restaurant space available
- High profile site with strong daytime population - 107,000 in 3 miles
- 16 acres at one of Carlsbad's key intersections
- Superior access to residential and significant daytime population
- Anchored by Lowe's Home Improvement Warehouse

SITE PLAN

RI

2501 - CALIFORNIA BANK & TRUST

2505

101 - CHIPOTLE

2509 - SHELL

2519

100 - FIVE GUYS

101 - KABOB LOUNGE

2521

100 - PANERA BREAD

101 - GEL TOUCH NAILS

102 - CARLSBAD DENTAL ARTS

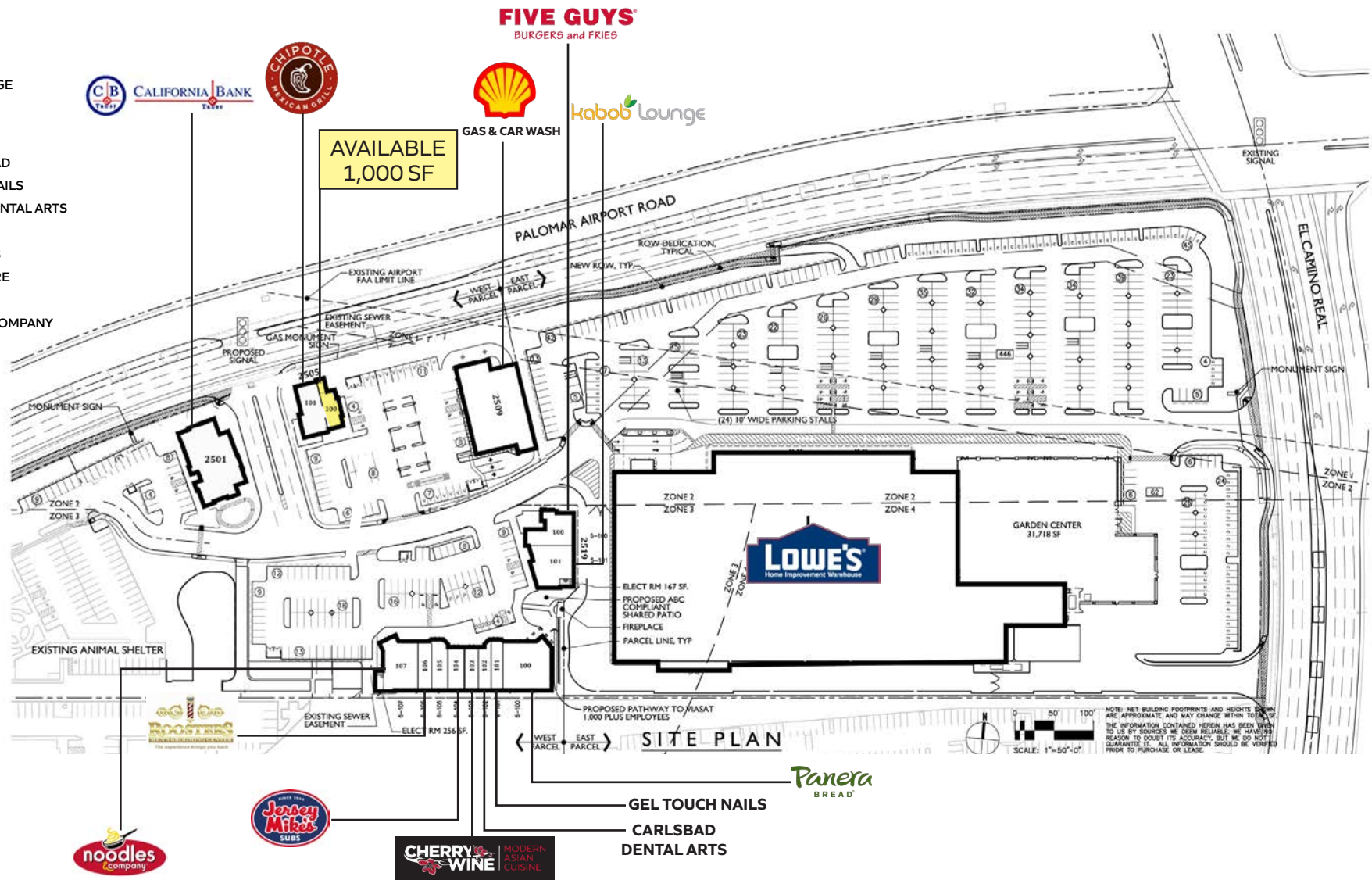
103 - CHERRY WINE

104 - JERSEY MIKES

105 - THE UPS STORE

106 - ROOSTERS

107 - NOODLES & COMPANY







Expanded Demographic Profile

ESTIMATED 2024 • CALCULATED USING PROPORTIONAL BLOCK GROUPS

2515 Palomar Avenue Palomar Commons Palmdale, California 92011

Rings: 1, 3, 5 mile radii

POPULATION

Total Population	1 mile1,718	3 miles66,250	5 miles229,646
Projected Population (2029)	1,697	66,303	229,403

HOUSING

Total Households	699	26,156	88,533
Projected Total Households (2029)	701	26,651	90,129

INCOME

Median Household Income	\$52,681	\$144,507	\$123,095
Average Household Income	\$106,685	\$190,565	\$173,384
Per Capita Income	\$43,861	\$74,841	\$66,835
Median Disposable Income	\$48,548	\$110,649	\$102,201
Average Disposable Income	\$78,920	\$124,804	\$115,390

DAYTIME DEMOS

Total Daytime Population	26,385	103,778	254,894
Daytime Population Workers	25,389	69,585	142,180
Daytime Population Residents	996	34,193	112,714

RACE & ETHNICITY

White	85649.80%	45,99869.43%	147,39164.18%
Black or African American	392.27%	8821.33%	3,8781.69%
American Indian& Alaska Native Population	201.16%	3720.56%	2,1790.95%
Asian Population	1277.39%	6,82610.30%	17,5287.63%
Pacific Islander Population	30.17%	1200.18%	8100.35%
Other Race Population	38222.22%	3,2304.88%	24,39210.62%
Population of Two or More Races	29216.99%	8,82313.32%	33,46814.57%
Hispanic Population	71041.33%	10,26115.49%	57,08024.86%
Non-Hispanic Population	1,00858.67%	55,98984.51%	172,56775.14%

EDUCATION

Bachelor's Degree	17514.82%	18,01437.43%	54,74532.90%
Graduate/Professional Degree	1159.74%	12,43825.84%	35,08721.09%

AGE

Median Age	41.8	46.3	42.8
------------	------	------	------



DON MOSER • 858.523.2087 • dmoser@retailinsite.net

MATT MOSER • 858.523.2096 • mmoser@retailinsite.net

405 S. HIGHWAY 101, STE 150, SOLANA BEACH, CA 92075 • LIC # 01206760 T: 858 523 2090 • RETAILINSITE.NET