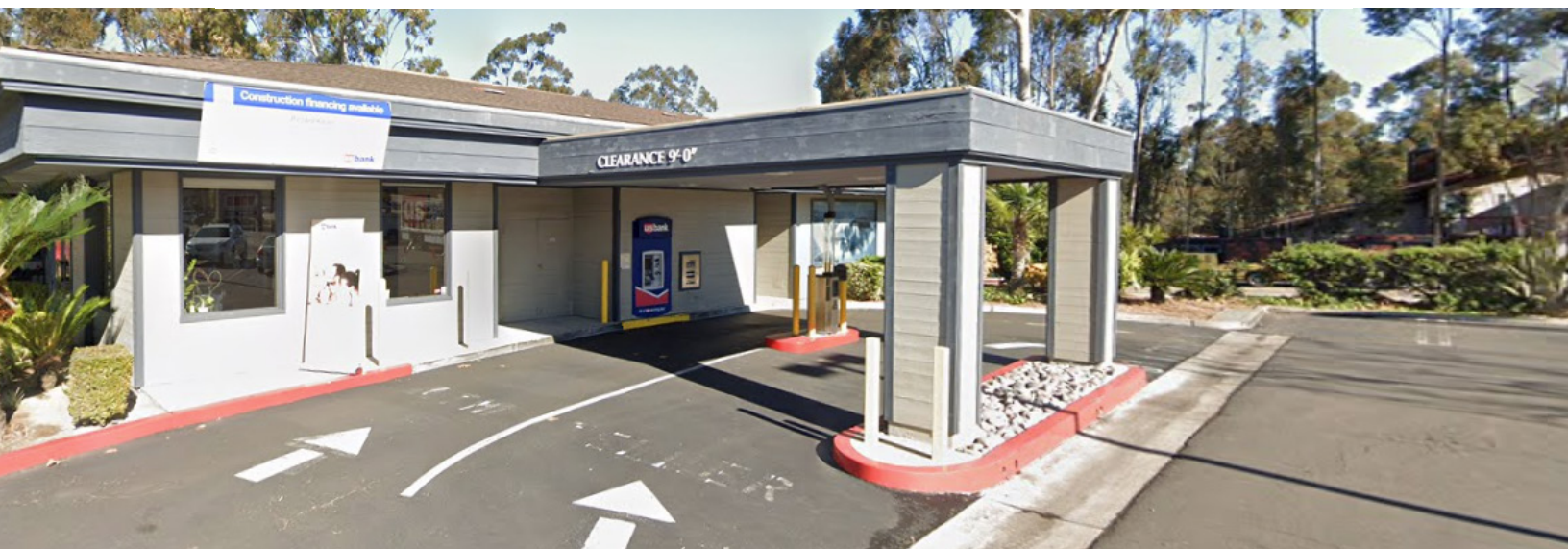


# Vons Anchored Center-Adjacent to Starbucks San Diego, CA

**100% LEASED.**

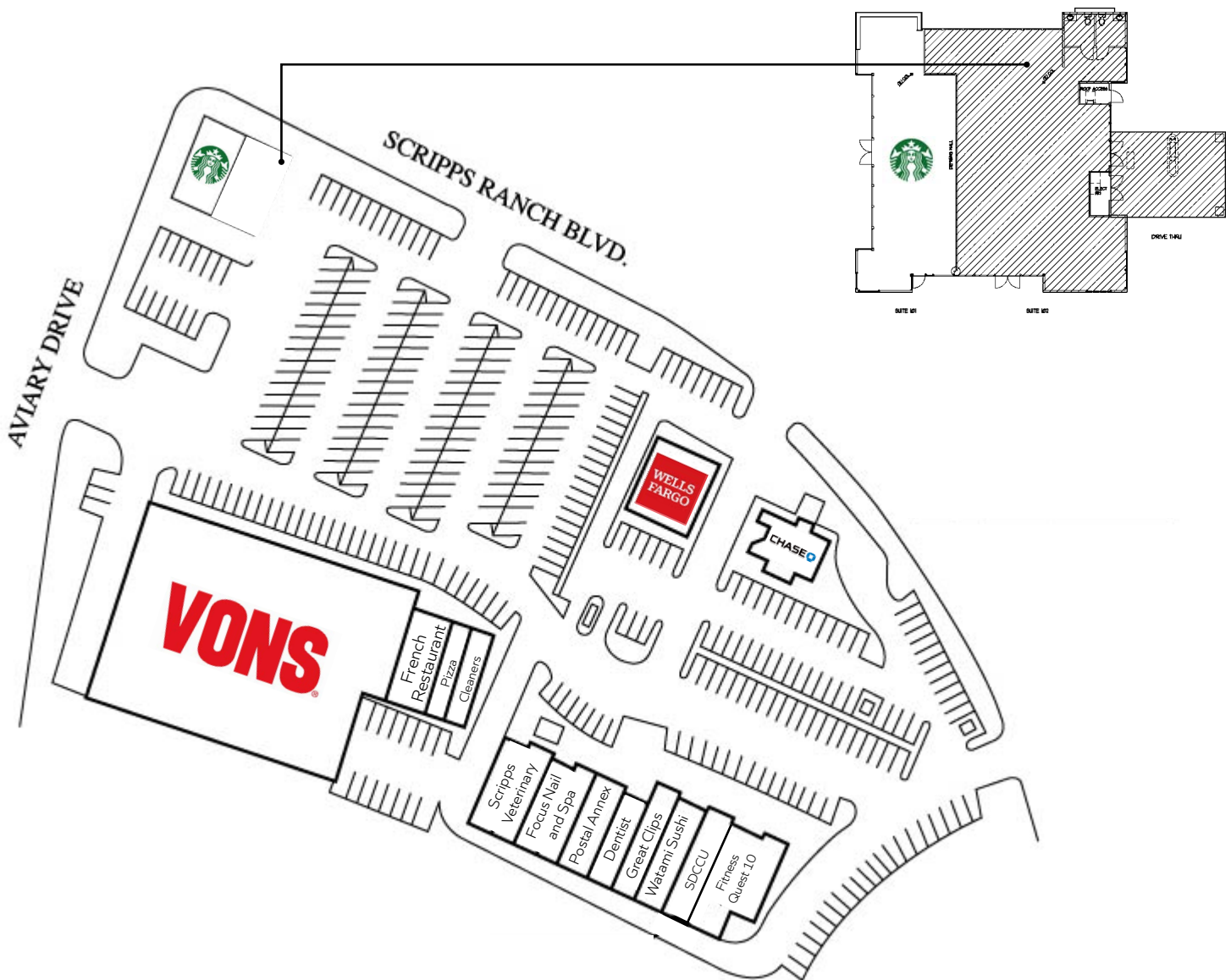
10000 SCRIPPS RANCH BLVD



**Don Moser.** 858.523.2087. [dmoser@retailinsite.net](mailto:dmoser@retailinsite.net)

**Blake Moser.** 858.523.2092. [bmoser@retailinsite.net](mailto:bmoser@retailinsite.net)

**Maya Grim.** 858.523.2094. [mgrim@retailinsite.net](mailto:mgrim@retailinsite.net)

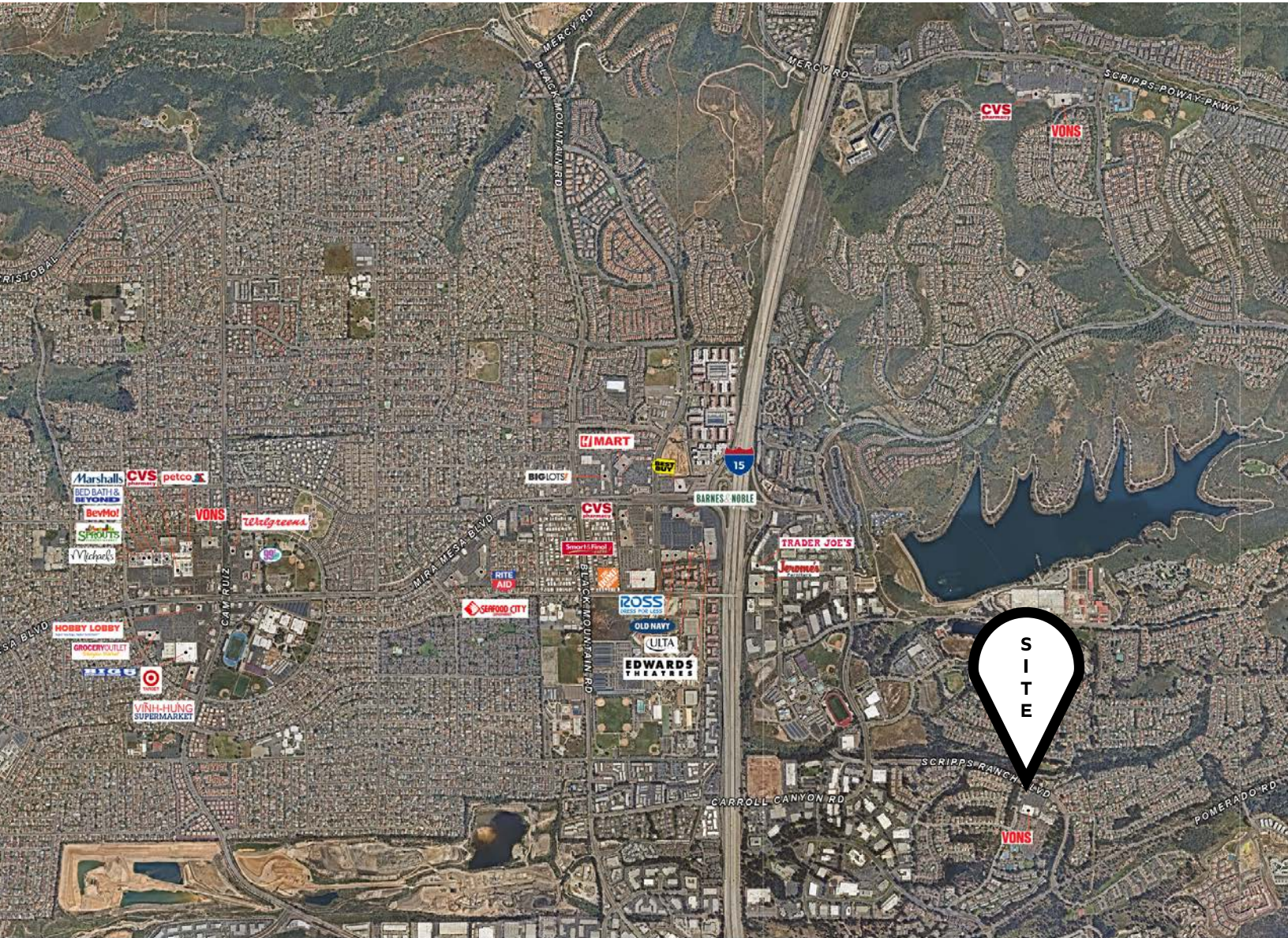


## Property Features.

- + Vons Anchored Center in affluent Scripps Ranch trade area
- + End cap drive-through adjacent to Starbucks
- + Excellent monument signage and ample parking









# 10000 Scripps Ranch Blvd, San Diego, CA 92131



## POPULATION

	1 mile	3 miles	5 miles
Total Population	7,258	94,905	187,608
Projected Population (2022)	7,830	99,088	193,944



## HOUSING

Total Households	2,768	31,264	62,776
Projected Total Households (2022)	2,967	32,629	64,806



## INCOME

Median Household Income	\$122,053	\$112,630	\$115,894
Average Household Income	\$163,223	\$141,151	\$143,742
Per Capita Income	\$60,977	\$46,918	\$48,523
Median Disposable Income	\$98,031	\$88,842	\$91,786
Average Disposable Income	\$112,484	\$101,790	\$103,441



## DAYTIME DEMOS

Total Daytime Population	12,588	94,080	210,109
Daytime Population Workers	8,942	51,684	125,978
Daytime Population Residents	3,646	42,396	84,131



## RACE & ETHNICITY

White	5,315 <b>73.24%</b>	43,874 <b>46.23%</b>	90,174 <b>48.07%</b>
Black or African American	234 <b>3.22%</b>	3,736 <b>3.94%</b>	6,241 <b>3.33%</b>
American Indian & Alaska Native Population	15 <b>0.21%</b>	329 <b>0.35%</b>	673 <b>0.36%</b>
Asian Population	1,066 <b>14.69%</b>	35,621 <b>37.53%</b>	68,250 <b>36.38%</b>
Pacific Islander Population	19 <b>0.26%</b>	468 <b>0.49%</b>	771 <b>0.41%</b>
Other Race Population	191 <b>2.63%</b>	4,556 <b>4.80%</b>	8,931 <b>4.76%</b>
Population of Two or More Races	417 <b>5.75%</b>	6,320 <b>6.66%</b>	12,568 <b>6.70%</b>
Hispanic Population	821 <b>11.31%</b>	12,762 <b>13.45%</b>	25,398 <b>13.54%</b>
Non-Hispanic Population	6,437 <b>88.69%</b>	82,143 <b>86.55%</b>	162,211 <b>86.46%</b>



## EDUCATION

Bachelor's Degree	2,165 <b>42.86%</b>	21,955 <b>34.26%</b>	43,963 <b>34.04%</b>
Graduate/Professional Degree	1,319 <b>26.11%</b>	14,213 <b>22.18%</b>	29,337 <b>22.72%</b>



## AGE

Median Age	42.1	36.4	37.7
------------	------	------	------