

Park Summit

6TH AVE & UPAS ST, BANKER'S HILL

GROUND LEVEL
RETAIL/RESTAURANT
SPACES AVAILABLE



CONCEPTUAL RENDERING - 5TH AVENUE ELEVATION

Park Summit.

Currently under construction, **Park Summit** is located in Banker's Hill, one of San Diego's most desirable neighborhoods. The best-in-class project consists of 265 Class A+ apartment units and stands 21 stories with stellar views of Balboa Park, downtown, San Diego Bay and the ocean. Amenities include gym, clubroom, pool, jacuzzi, zen garden, fire pits and co-working space with a mezzanine.

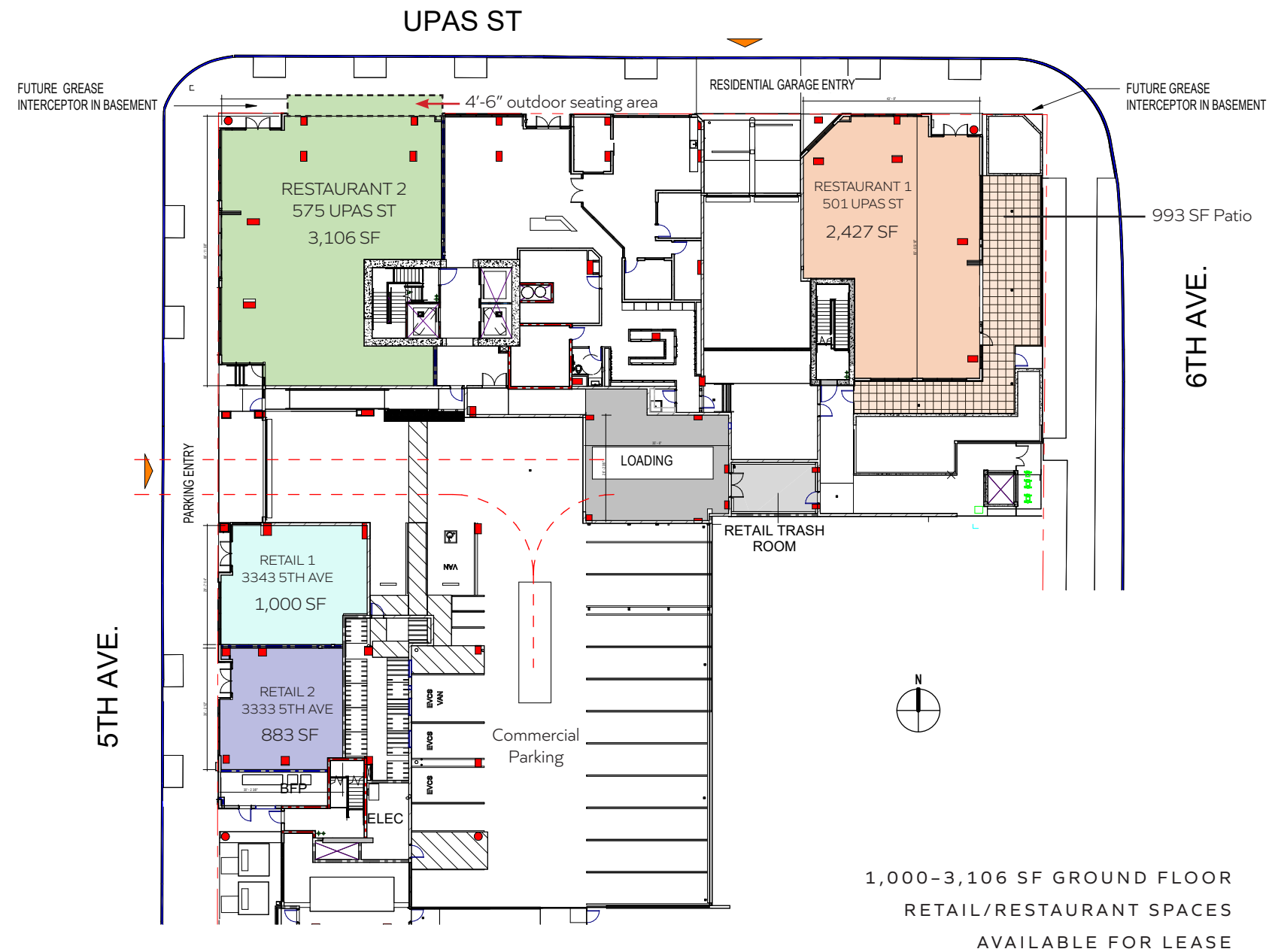
- Centrally located Mixed Use property in the heart of San Diego
- Walking distance to Balboa Park (±14 million visitors per year) and San Diego Zoo (over 4 million visitors per year)
- Minutes from Hillcrest and Downtown San Diego
- Traffic count: 6th Avenue: ±17,623 ADT

PARK SUMMIT
CONCEPTUAL
RENDERING



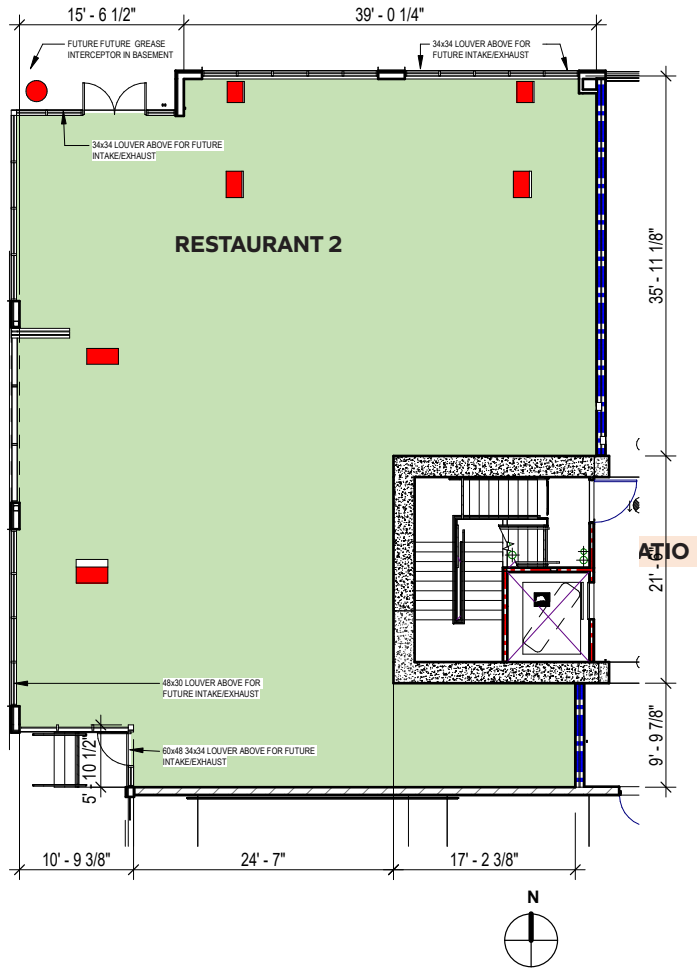


Site Plan.

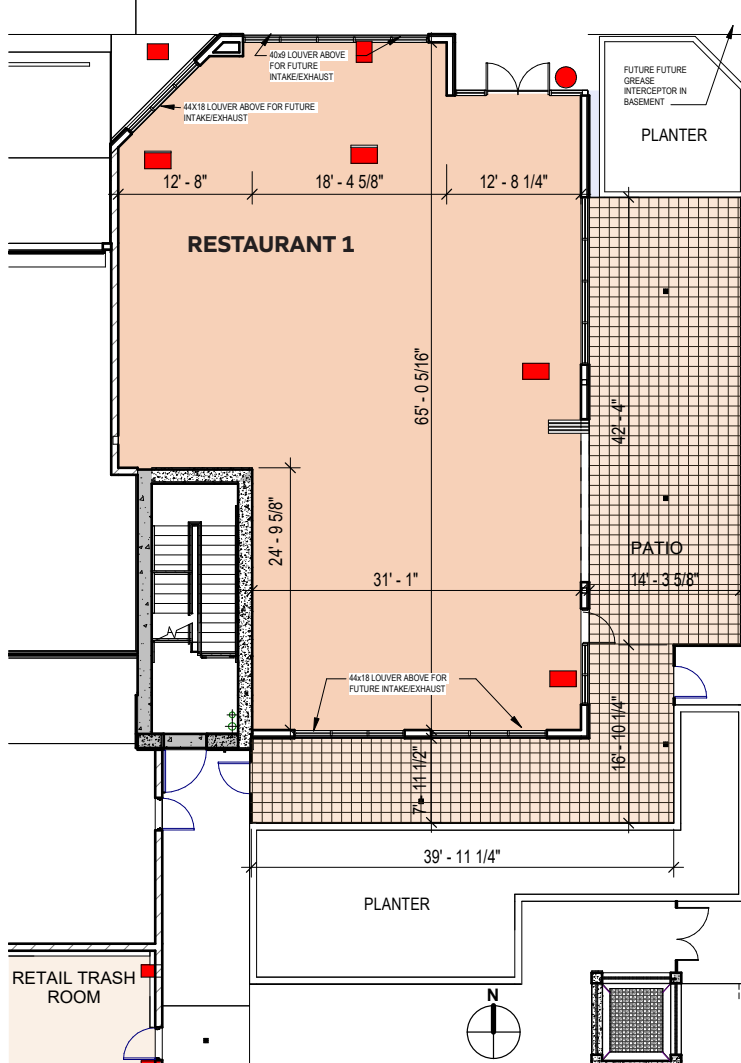




Site Plan.



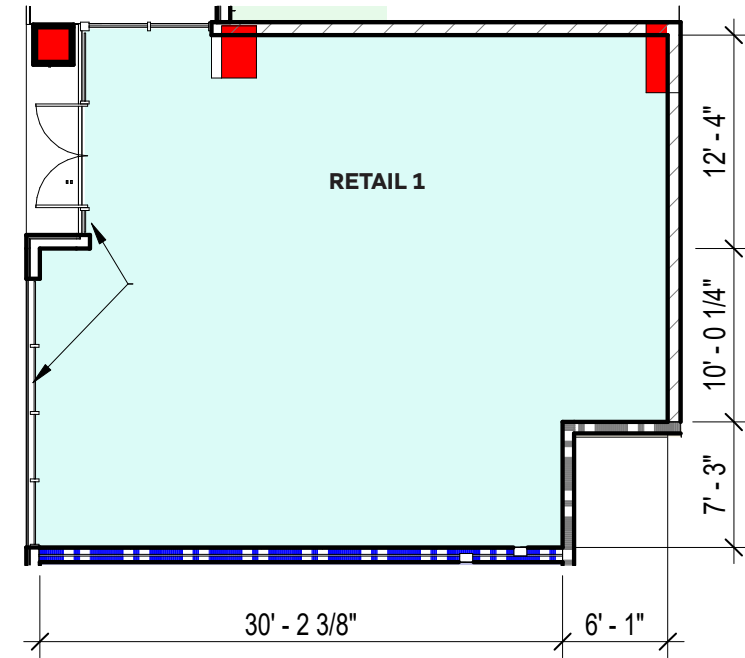
RESTAURANT 2: 575 UPAS ST
3,106 SF | 16' CEILING HEIGHT



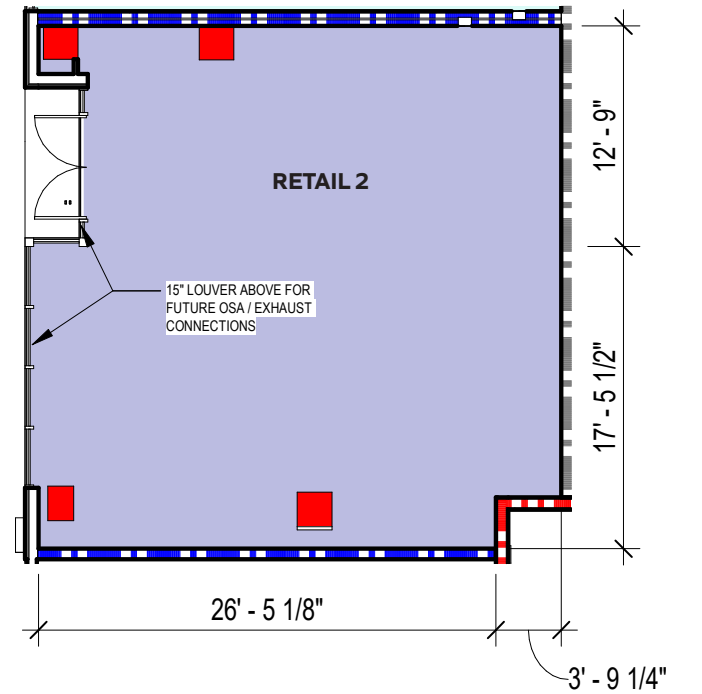
RESTAURANT 1: 501 UPAS ST
2,427 SF WITH 993 SF PATIO | 13'-4" CEILING HEIGHT



Site Plan.



RETAIL 1: 3343 5TH AVE
1,000 SF | 17'-10" CEILING HEIGHT



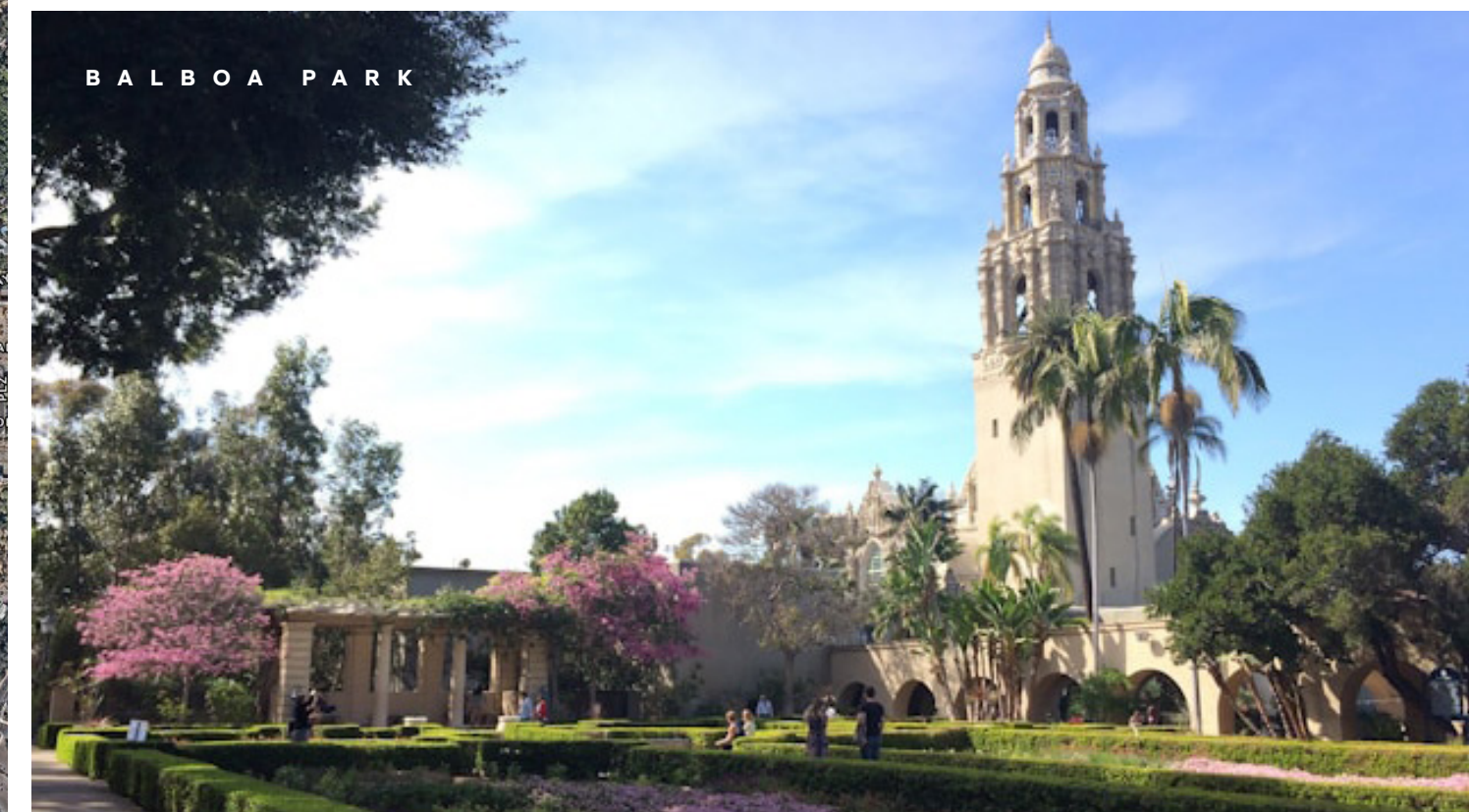
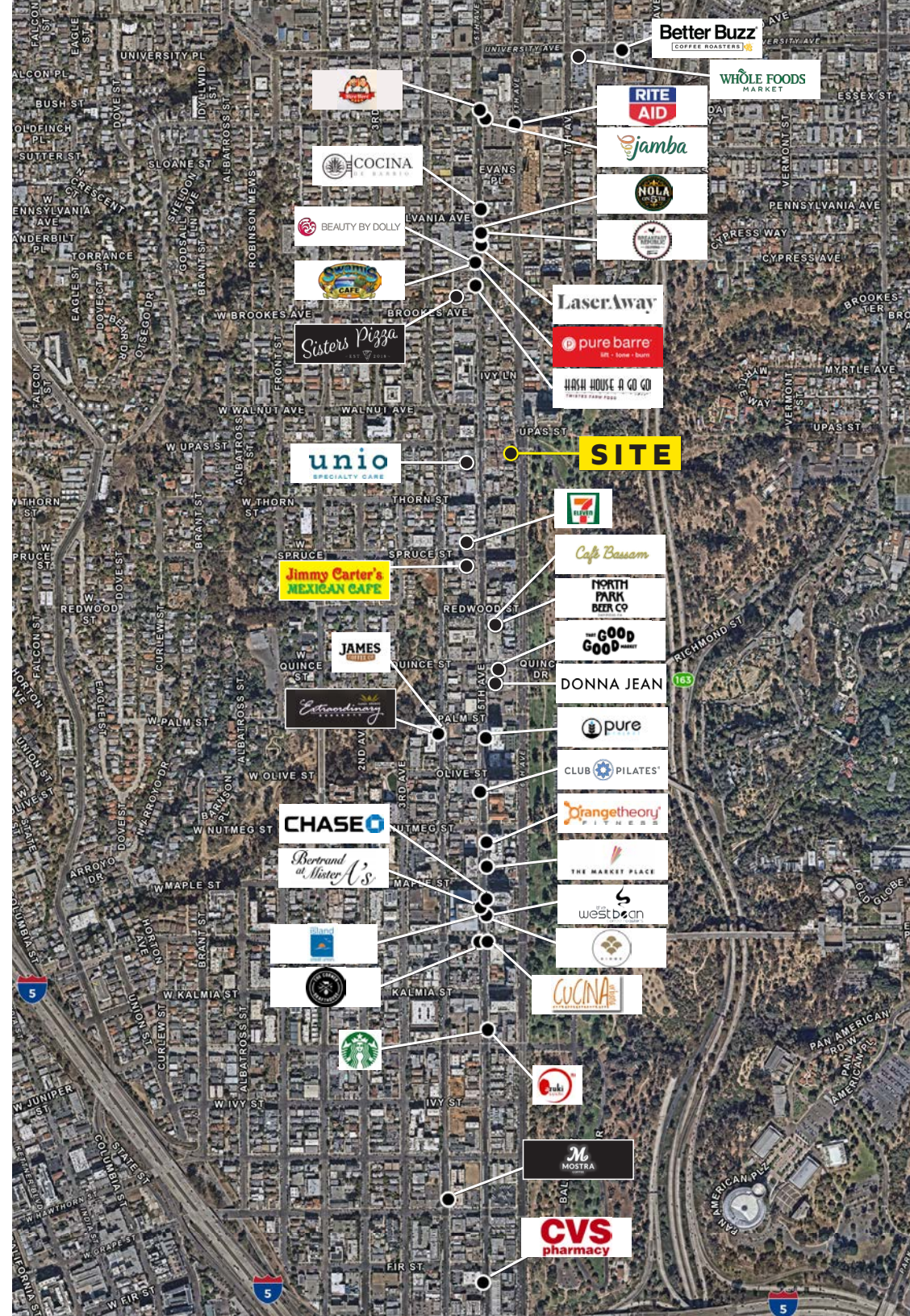
RETAIL 2: 3333 5TH AVE
883 SF | 18'-4" CEILING HEIGHT

The Neighborhood.

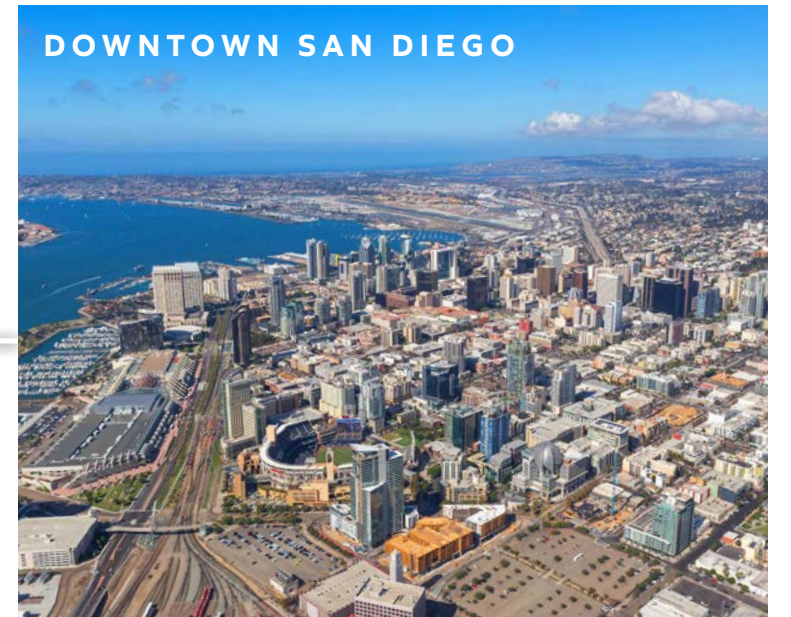
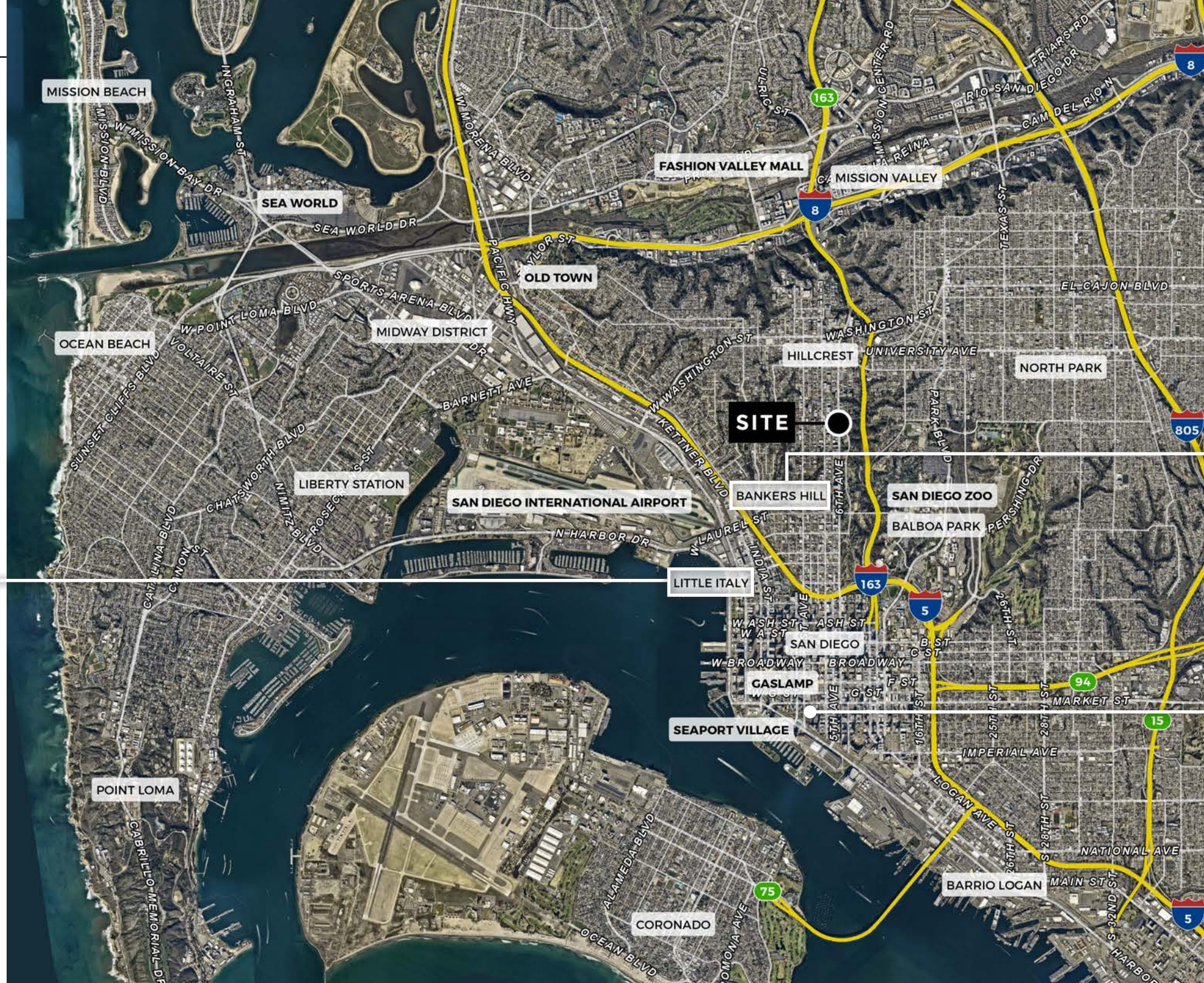
BANKER'S HILL
// HILLCREST

SAN DIEGO / CALIFORNIA

RI



Trade Area Aerial.

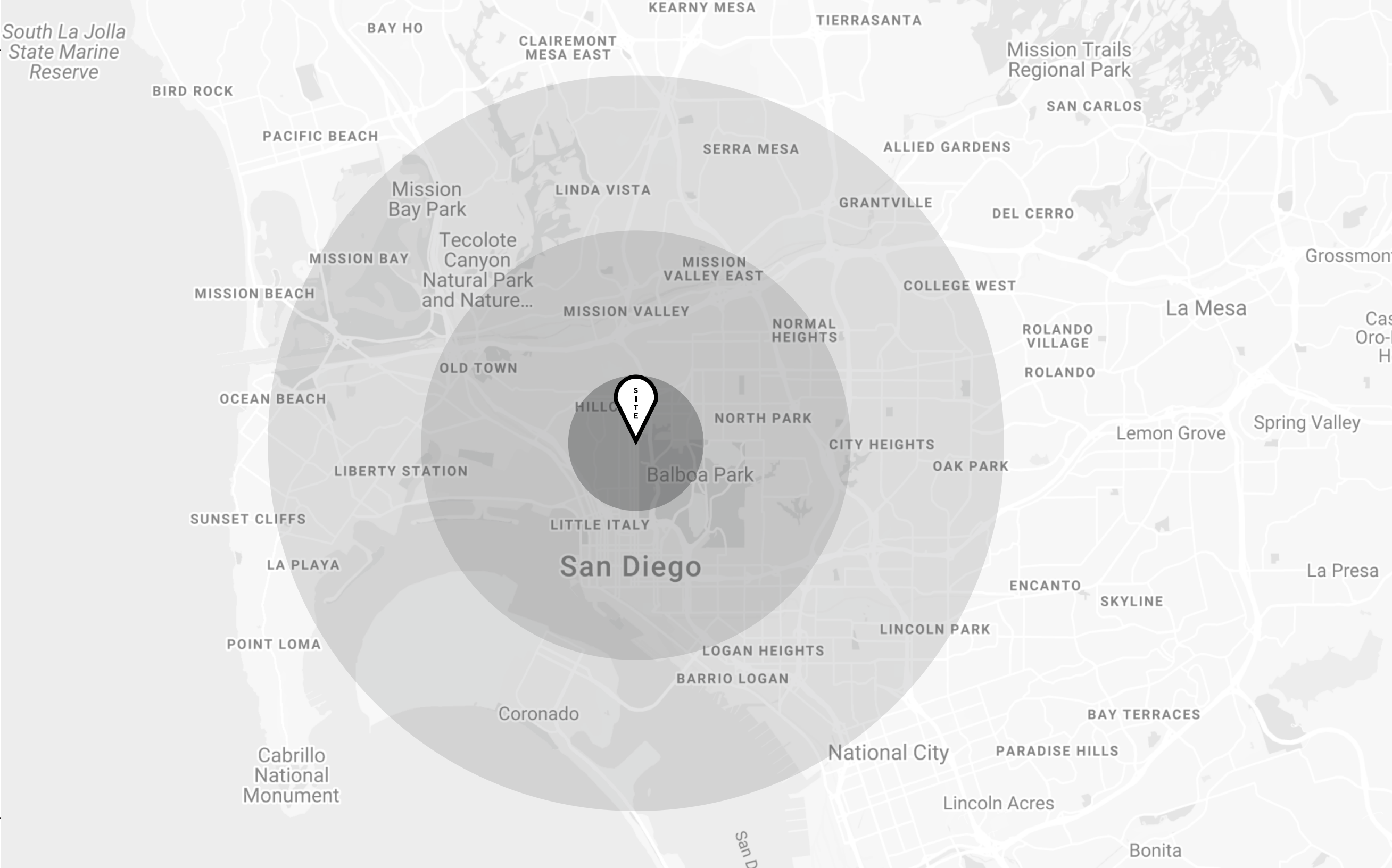


Demographics.

6TH AVE & UPAS ST,
BANKER’S HILL

SAN DIEGO / CALIFORNIA

| | 1 mile | 3 miles | 5 miles |
|--------------------|-----------|-----------|-----------|
| Daytime Population | 29,648 | 326,235 | 665,957 |
| Average Age | 41.4 | 36.6 | 34.8 |
| Average Income | \$134,900 | \$116,961 | \$114,468 |



Park Summit

6TH AVE & UPAS ST // BANKER'S HILL, SD



Mike Moser

858.523.2089 | mikemoser@retailinsite.net

Blake Moser

858.523.2092 | bmoser@retailinsite.net



RETAIL INSITE

405 S. Highway 101, Ste. 150
Solana Beach, CA 92075
Lic # 01206760 | retailinsite.net