



Pacific Beach

PACIFIC BEACH -
Three miles of boardwalk and year-round festivities makes this coastal community a top destination for both college students and young adults. This neighborhood comes alive at night with the glow of bonfires and the electricity of the area's top-rated patios and bars.

910 GRAND IN PACIFIC BEACH

910 GRAND IN PACIFIC BEACH is located along Grand Avenue, one of the main thoroughfares. This property is a 18,622 square-foot shopping center with boutiques, office space, and restaurants. Two blocks from the ocean, 910 Grand is in close walking distance to San Diego's top hotels including The Catamaran Resort, The Surfer Hotel, and Tower23 Hotel. This property is a top destination for coastal residents, college students, and tourists.

PROPERTY HIGHLIGHTS



18,622 SF GLA

Built 1987

Rare Private Parking Lot

2 Blocks From Ocean



EXTERIOR REMODEL
RECENTLY COMPLETED BY
NEW OWNERSHIP



RETAIL TENANTS



248,323

DAYTIME
POPULATION

53%

OF THE
POPULATION
IS 20-39 Y.O.

DEMOGRAPHICS
(5 MILES)

POPULATION
444,421

AVERAGE HOME VALUE
\$964,214

HOUSEHOLDS
196,283

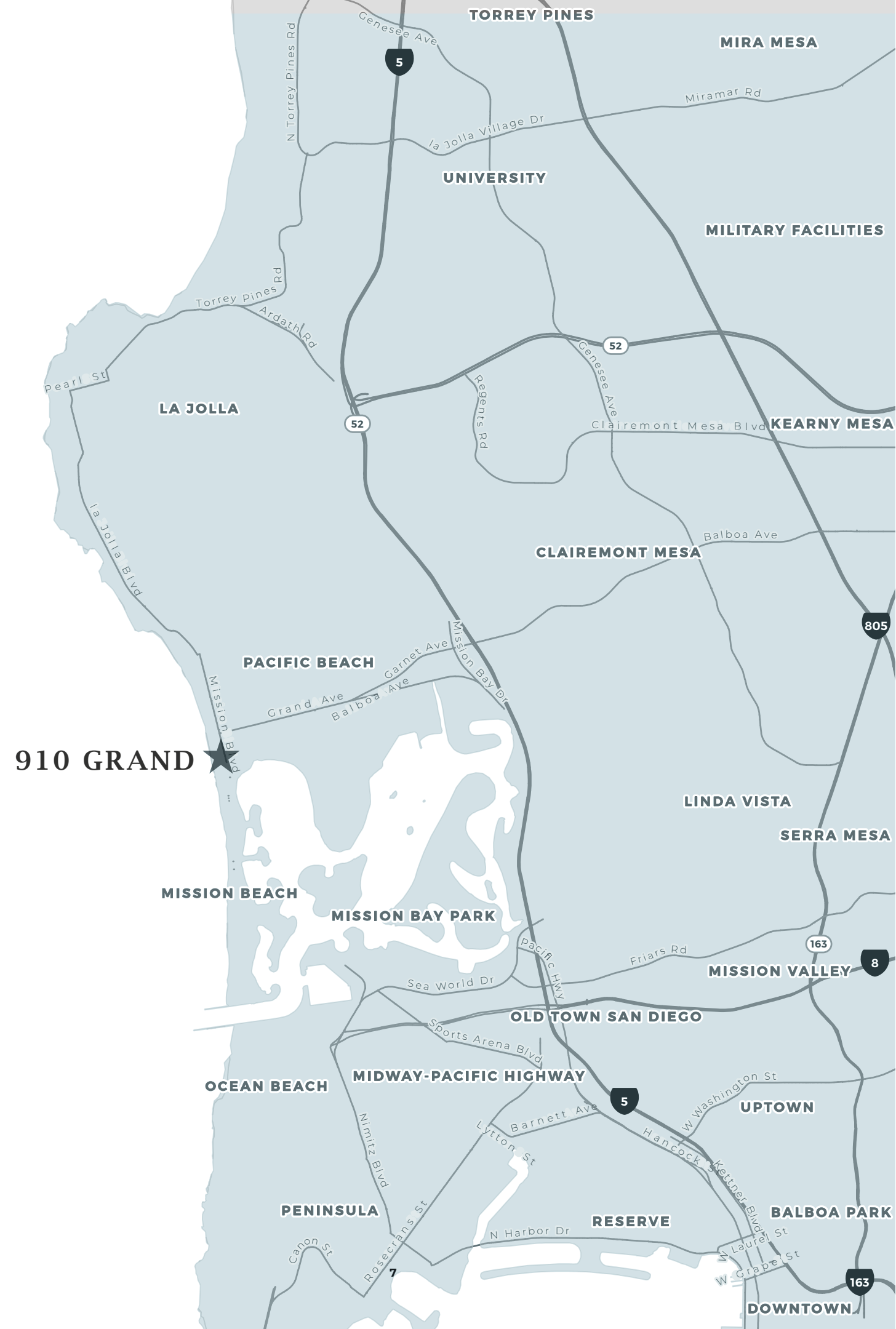
MEDIAN HH INCOME
\$88,053

AVERAGE HH INCOME
\$122,471

MEDIAN AGE
37

40%

HOUSEHOLDS
EARN OVER
\$100,000



REDEVELOPMENT & REVITALIZATION TO FIT TODAY'S RETAIL LANDSCAPE

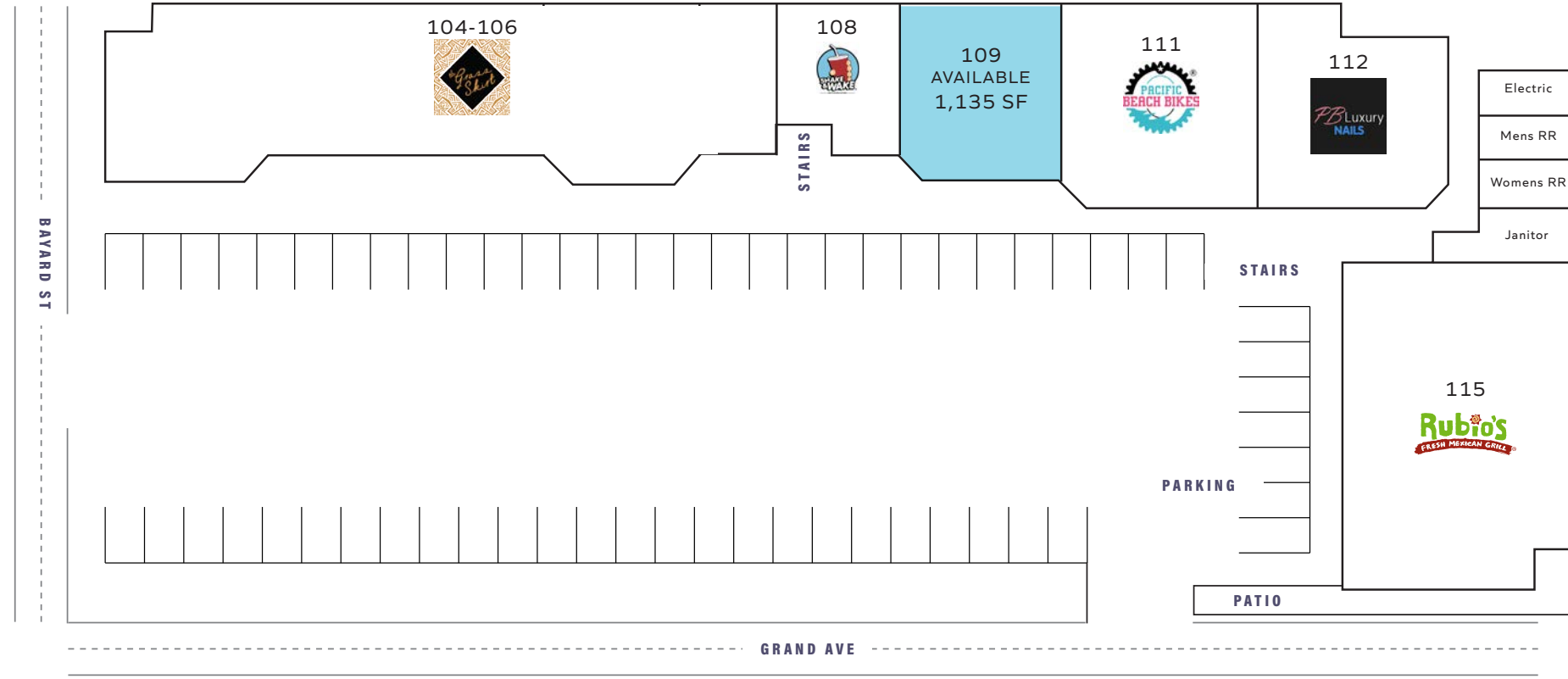


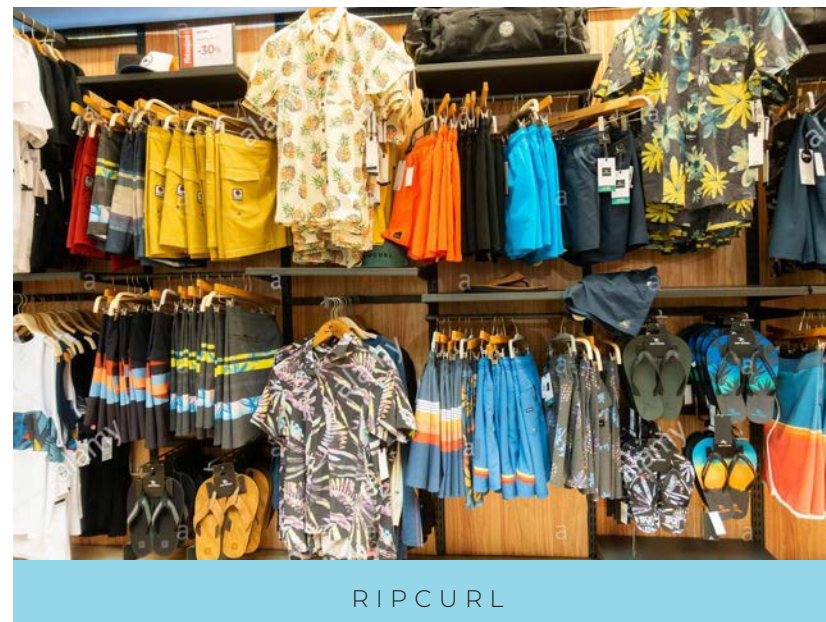
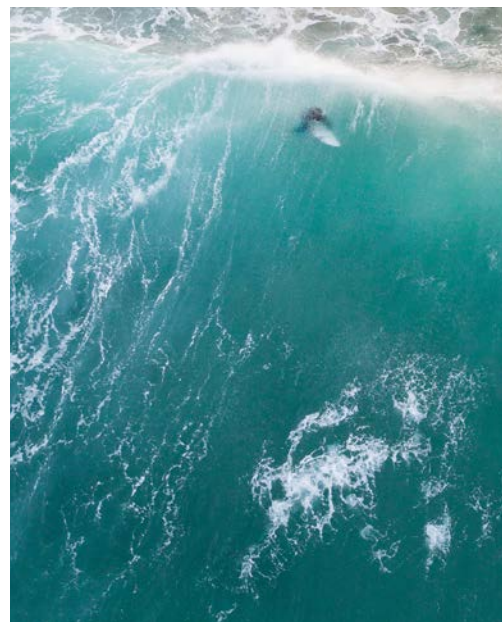
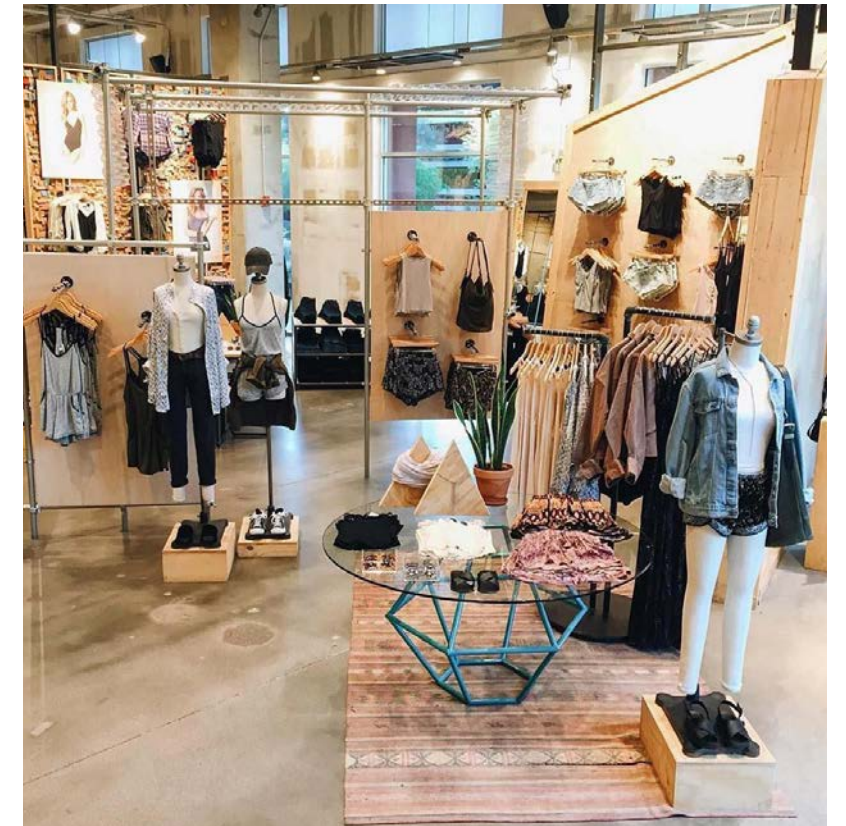
Site Plans

UPPER LEVEL / 2ND FLOOR



LOWER LEVEL / 1ST FLOOR





URBAN OUTFITTERS

IN THE
NEIGHBORHOOD



BIRD ROCK COFFEE

BOARD AND BREW

ALLISON CAMPBELL
858.524.3266
acampbell@retailinsite.net

BRIAN G. PYKE
858.324.6103
bpyke@retailinsite.net

JOHN BLEDSOE
858.314.9035
jbledsoe@retailinsite.net

MATT MOSER
858.523.2096
mmoser@retailinsite.net

9 1 0 G R A N D

PACIFIC BEACH, SAN DIEGO, CALIFORNIA

