

100% Leased

**195
S Glassell St**

ORANGE / CALIFORNIA



The
Neighborhood.



OLD TOWNE ORANGE / CALIFORNIA

[illegible]

About 195 Glassell St.



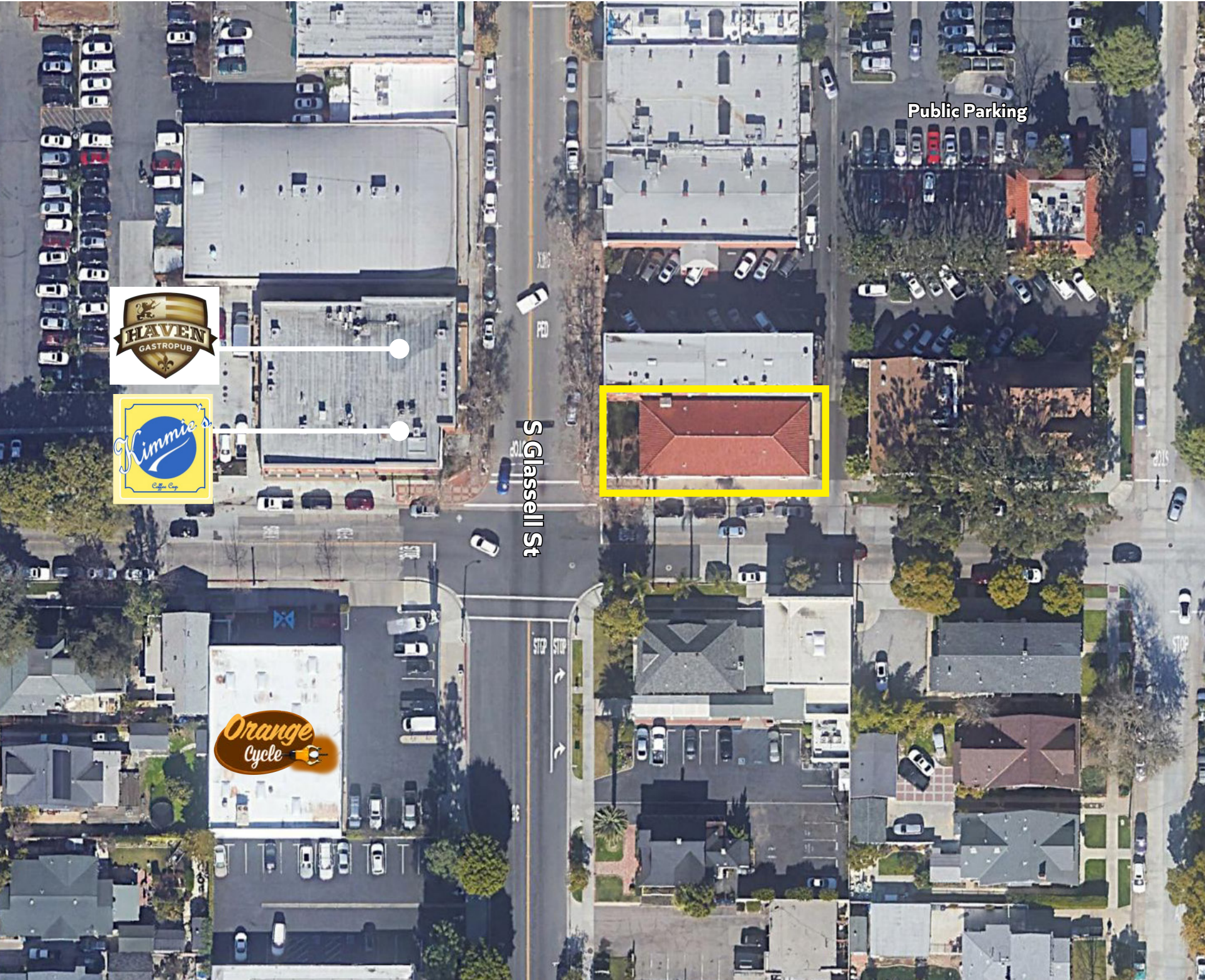
PROPERTY HIGHLIGHTS

- Join one of the hottest retail and restaurant markets in Orange County.
- Walking distance to Gabbi's, Urth Caffè, Philz Coffee, Snooze, Citrus City Grille, Bosscat, and more.
- Conveniently located within walking distance of the Orange Circle, Chapman University, and the Metrolink.
One metrolink stop away from Angel Stadium and the Honda Center.
- Freestanding building located on Glassell St across Haven Craft Kitchen and Bar.

The Location.

ORANGE / CALIFORNIA

Old Towne Orange offers arterial freeway access and a central location. That makes it accessible to residents from across the metro, which helps drive demand. It's a community in transformation with an emerging creative office market. A hotbed for food the local area is highly amenitized with long loved favorites such as Gabbi's Mexican Kitchen, Citrus City Grille, Haven Kitchen and Bar, and Francoli Gourmet. The food scene continues to transform with new concepts such as Urth Caffé, Bosscat Kitchen and Libations, Philz Coffee, The Taco Stand, Finney's Crafthouse, Snooze, and O Sea taking hold. Home to many businesses from the Oldest Operating Bank to the oldest operating soda fountain. Old Towne Orange is comprised of 1,300 residential homes and Chapman University with 10,001 students enrolled. You cannot recreate history; you can only choose to be a part of it.



191 S Glassell St.

O R A N G E / C A L I F O R N I A



**100%
Leased.**

Chris Hodgman

949.284.0223
chodgman@retailinsite.net
lic 01881298

Matt Moser

858.523.2096
mmoser@retailinsite.net
lic 01772051



RETAIL INSITE