

231 W HANFORD-ARMONA RD

RI

LEMOORE, CA | SOLD!



FEATURES

- SOLD!
- Main retail intersection in Lemoore
- Great Visibility and access
- Located in anchored shopping center

DEMOGRAPHICS

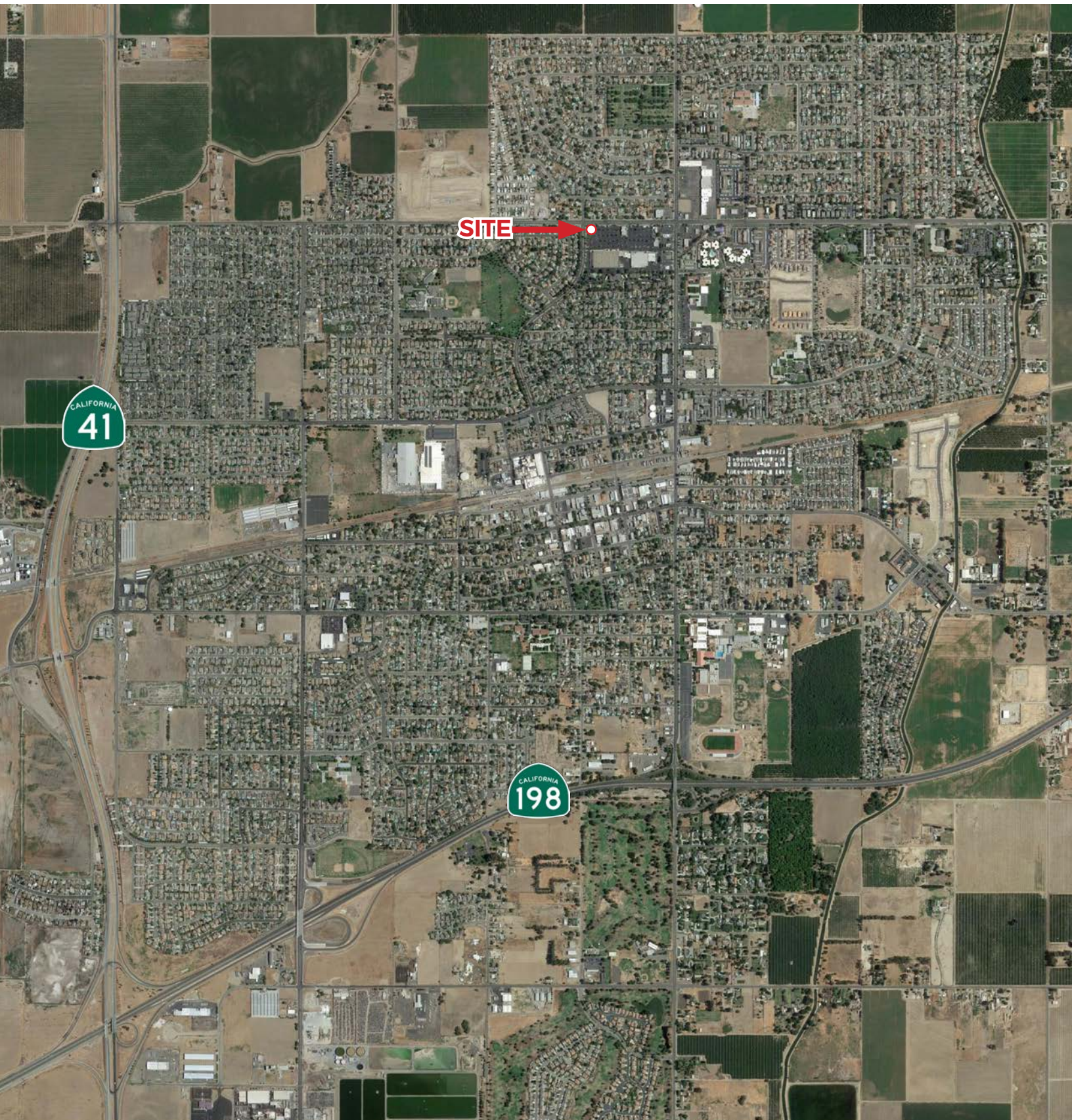
	1 mile	2 miles	3 miles
POPULATION	13,851	25,811	29,296
AVERAGE HH INCOME	\$75,794	\$78,583	\$81,257
DAYTIME POPULATION	11,342	20,529	23,815



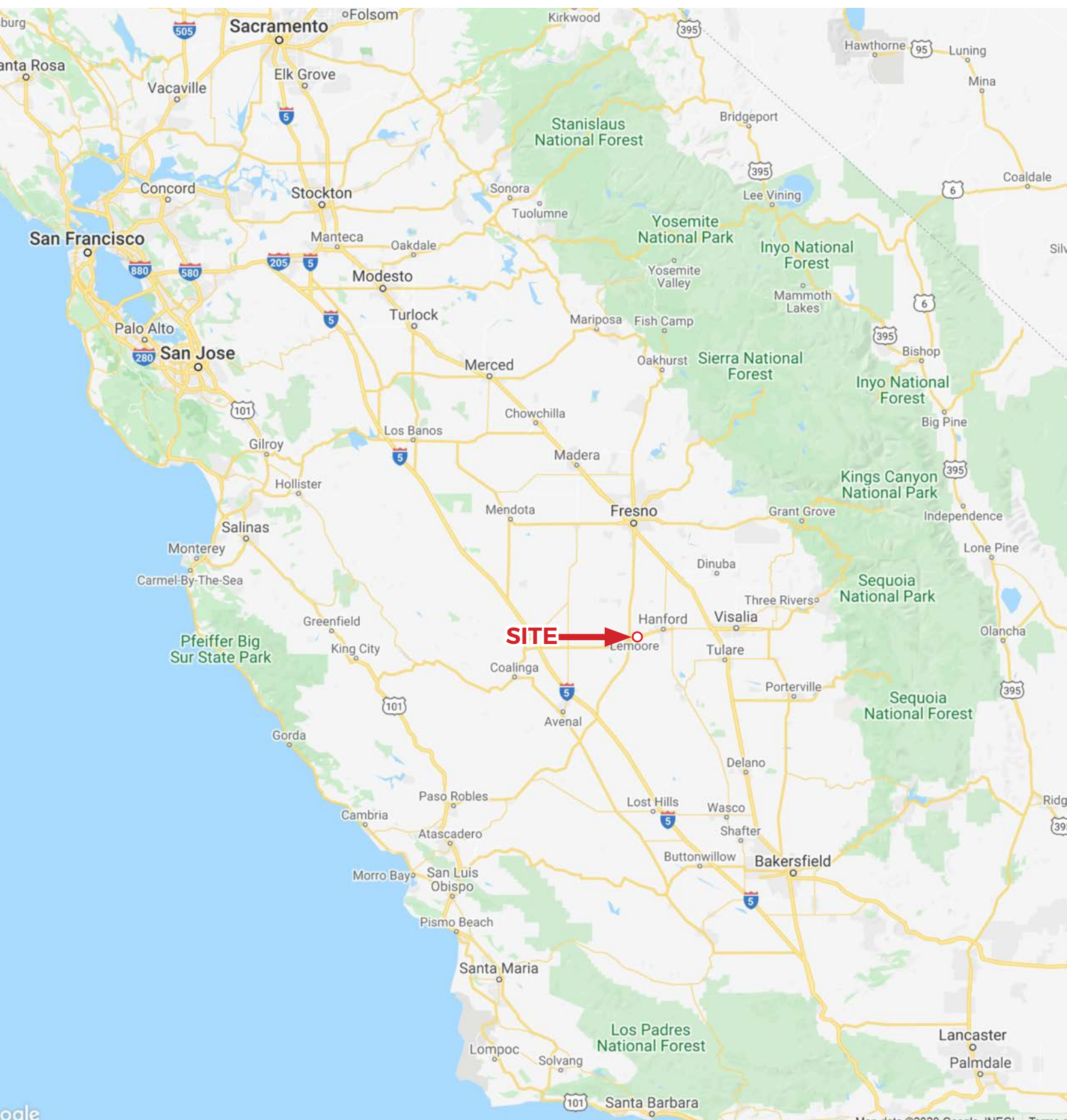
RETAIL INSITE

MIKE MOSER • 858.523.2089 • mikemoser@retailinsite.net

A MEMBER OF
CHAINLINKS
RETAIL ADVISORS



The information above has been obtained from sources believed to be reliable. While we do not doubt its accuracy, we have not verified it and make no guarantee, warranty or representation about it. It is your responsibility to independently confirm its accuracy and completeness. Any projections, opinions, assumptions or estimates used are for example only and do not represent the current or future performance of the property.



The information above has been obtained from sources believed to be reliable. While we do not doubt its accuracy, we have not verified it and make no guarantee, warranty or representation about it. It is your responsibility to independently confirm its accuracy and completeness. Any projections, opinions, assumptions or estimates used are for example only and do not represent the current or future performance of the property.



ESTIMATED 2020 • CALCULATED USING PROPORTIONAL BLOCK GROUPS

231 W Hanford-Armona Rd, Lemoore, California, 93245



POPULATION

1 mile

2 miles

3 miles

Total Population	13,851	25,811	29,296
Projected Population (2022)	14,486	26,899	30,625



HOUSING

4,721

8,687

9,794

Total Households	4,721	8,687	9,794
Projected Total Households (2022)	4,940	9,054	10,237



INCOME

Median Household Income	\$60,988	\$63,091	\$64,163
Average Household Income	\$75,794	\$78,583	\$81,257
Per Capita Income	\$25,647	\$26,451	\$27,166
Median Disposable Income	\$51,696	\$53,080	\$53,860
Average Disposable Income	\$61,186	\$63,030	\$64,696



DAYTIME DEMOS

Total Daytime Population	11,342	20,529	23,815
Daytime Population Workers	3,456	6,095	7,315
Daytime Population Residents	7,886	14,434	16,500



RACE & ETHNICITY

White	6,996	50.51%	13,530	52.42%	15,488	52.87%
Black or African American	907	6.55%	1,634	6.33%	1,825	6.23%
American Indian& Alaska Native Population	202	1.46%	407	1.58%	460	1.57%
Asian Population	1,199	8.66%	2,096	8.12%	2,273	7.76%
Pacific Islander Population	82	0.59%	144	0.56%	150	0.51%
Other Race Population	3,474	25.08%	6,190	23.98%	7,080	24.17%
Population of Two or More Races	991	7.15%	1,810	7.01%	2,019	6.89%
Hispanic Population	6,462	46.65%	11,876	46.01%	13,519	46.15%
Non-Hispanic Population	7,389	53.35%	13,934	53.98%	15,777	53.85%



EDUCATION

Bachelor's Degree	1,121	13.17%	2,164	13.66%	2,491	13.74%
Graduate/Professional Degree	375	4.41%	616	3.89%	757	4.18%



AGE

Median Age	30.6	30.6	31.0
------------	------	------	------

The information above has been obtained from sources believed to be reliable. While we do not doubt its accuracy, we have not verified it and make no guarantee, warranty or representation about it. It is your responsibility to independently confirm its accuracy and completeness. Any projections, opinions, assumptions or estimates used are for example only and do not represent the current or future performance of the property.