

Parkway Plaza Mall - El Cajon

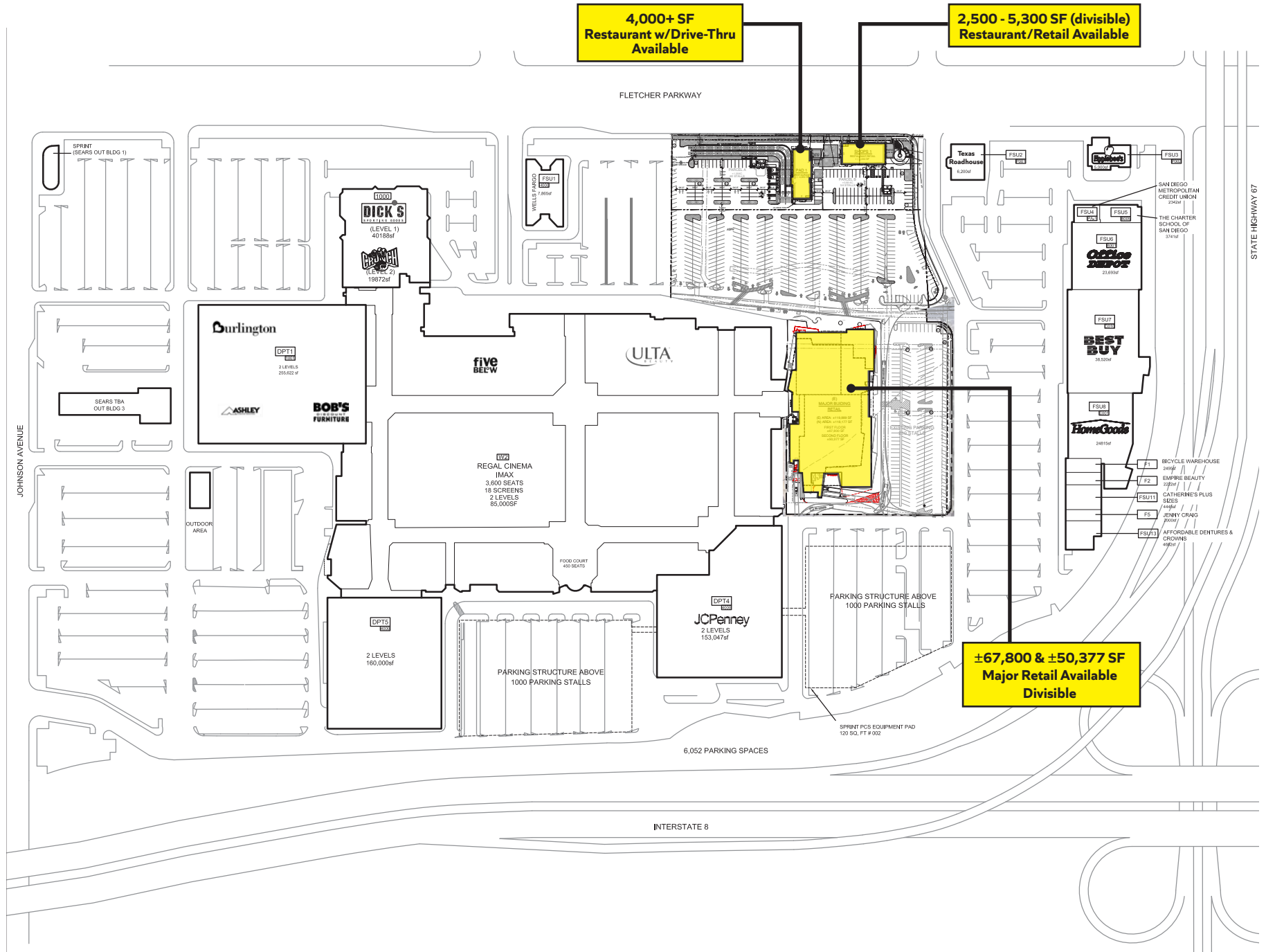
FOR LEASE | FORMER MACY'S & FREESTANDING PADS

291 FLETCHER PKWY, EL CAJON, CA 92020



Property Features.

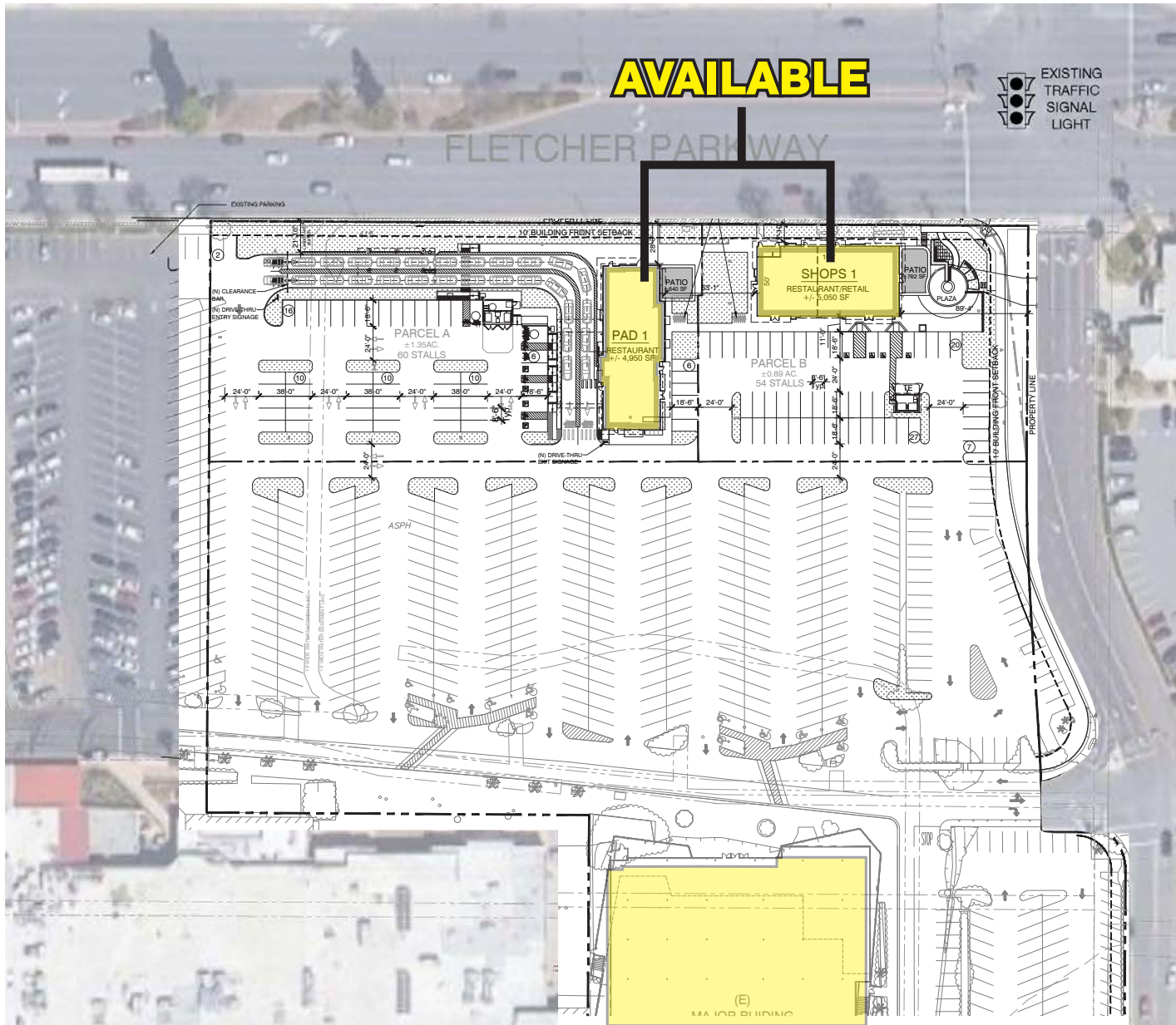
- + **Freestanding multi-tenant pads available:** 4,000 SF & 2,500–5,300 SF (divisible)
- + **Box space available:** First floor 67,800 SF and 2nd level 50,377 SF
- + Site located in Parkway Plaza Mall with great visibility to Fletcher Parkway
- + Strong co-tenants in the center include: JCPenney, Dick's Sporting Goods, Burlington, Ashley Furniture, Bob's Furniture, Home Goods, Best Buy
- + Traffic Count: Fletcher Parkway - 34,300 ADT



The information above has been obtained from sources believed to be reliable. While we do not doubt its accuracy, we have not verified it and make no guarantee, warranty or representation about it. It is your responsibility to independently confirm its accuracy and completeness. Any projections, opinions, assumptions or estimates used are for example only and do not represent the current or future performance of the property.

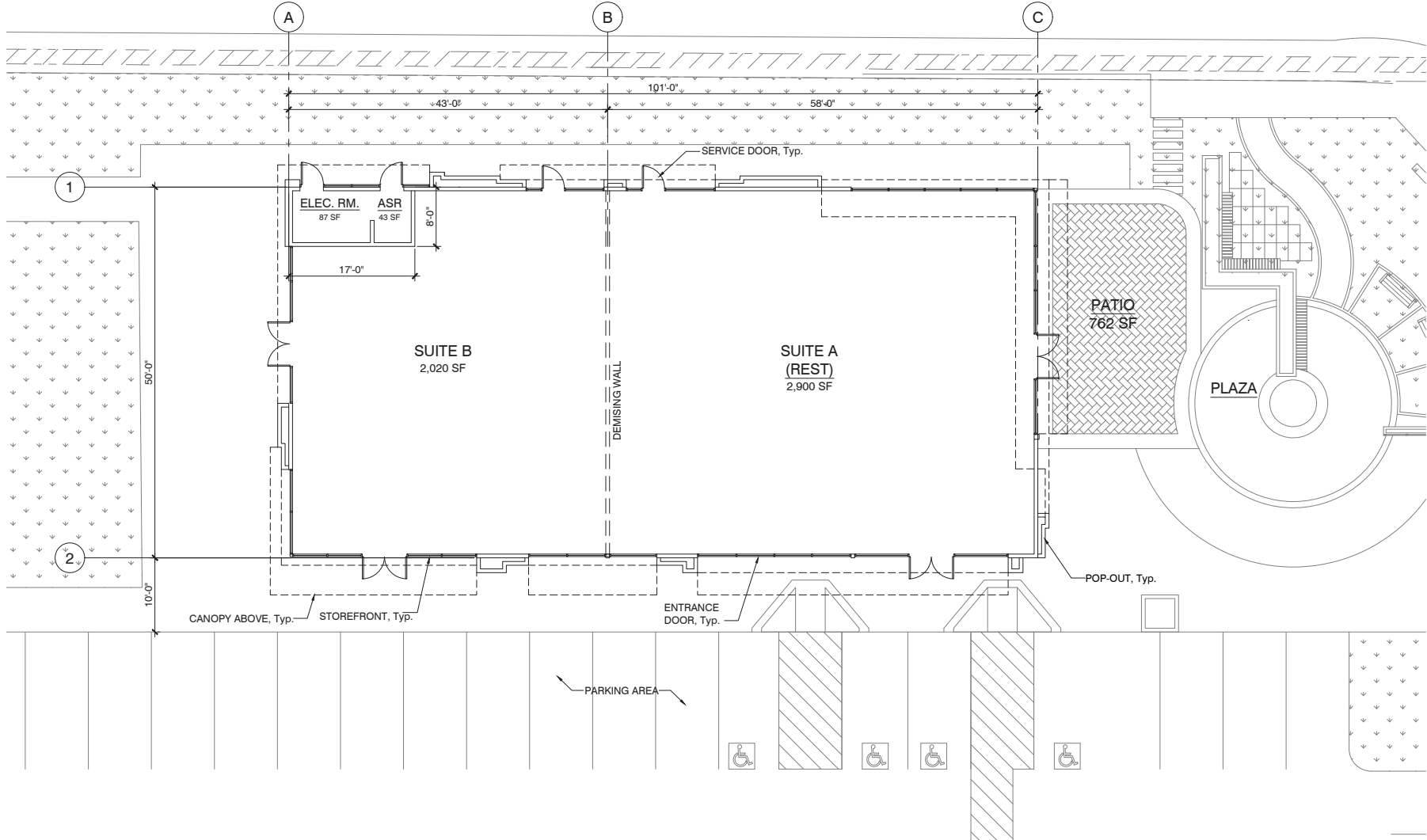






LOCATION MAP







CONCEPTUAL RENDERING



NORTH ELEVATION



WEST ELEVATION



SOUTH ELEVATION



EAST ELEVATION



KEY PLAN

FINISH SCHEDULE:

1. EXTERIOR CEMENT PLASTER FINISH	8. ALUMINUM SIDING/FRONT
2. WOOD COMPOSITE SIDING	9. METAL LOUVER / HAILING
3. TILE PANEL	10. WALL SCIENCE
4. STONE VENEER	11. METAL DOOR
5. METAL CANOPY/TRIM	12. SIGNAGE UNDER SEPARATE PERMIT
6. METAL POST	13. SPANDREL GLASS
7. WOOD SLATS	

COLORS AND MATERIAL:

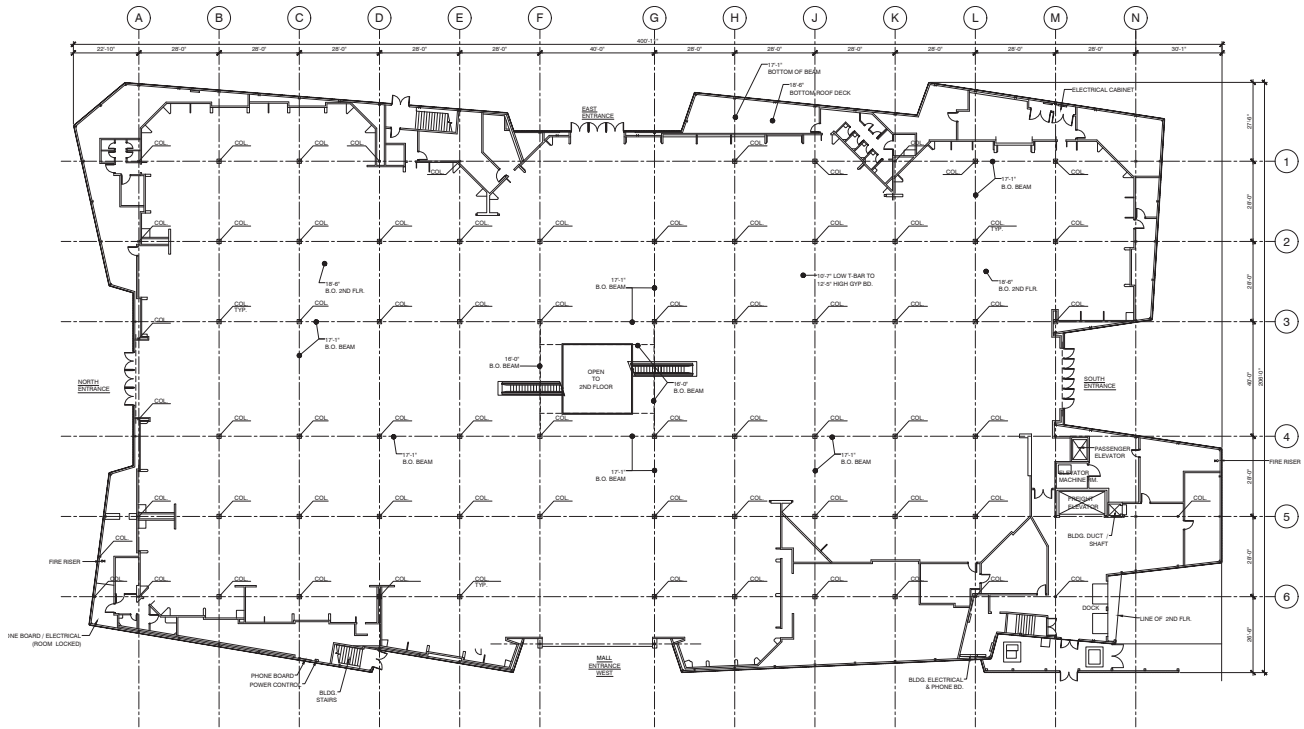
A	SW 8645 "NATURAL WHITE" BY SHERWIN WILLIAMS
B	SW 8554 "LAZY GRAY" BY SHERWIN WILLIAMS
C	SW 7046 "PAVESTONE" BY SHERWIN WILLIAMS
D	SW A068 "TRICORN ELIZ" BY SHERWIN WILLIAMS
E	"NIGENWY SAND" BY NICHAS
F	VINTAGEWOOD "POPULAR" 2006 BY NICHAS
G	CLIT EDGARDE STONE "SEASHELL" BY ELWOOD STONE
H	WOOD COMPOSITE "BRAZILIAN IPE" BY NEW LUMWOOD
I	ALL INIUM "860 DARK BRONZE" BY NEWTECH WOOD

NOTE:
ALL SIGNAGE IS CONCEPTUAL AND SHALL BE BY SEPARATE PERMIT IN ACCORDANCE WITH EDCM CHAPTER 17.180.

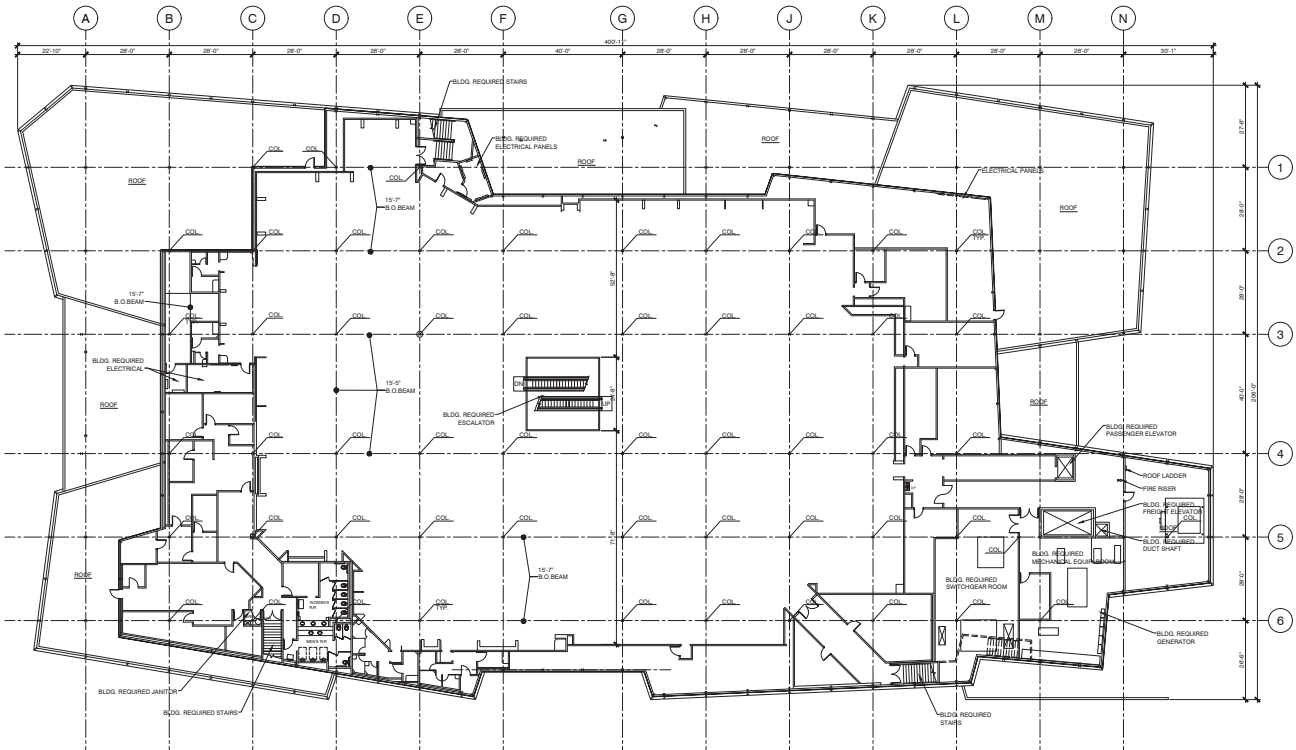


ANCHOR FIRST FLOOR LEASE PLANS

FIRST FLOOR - 69,646 SF



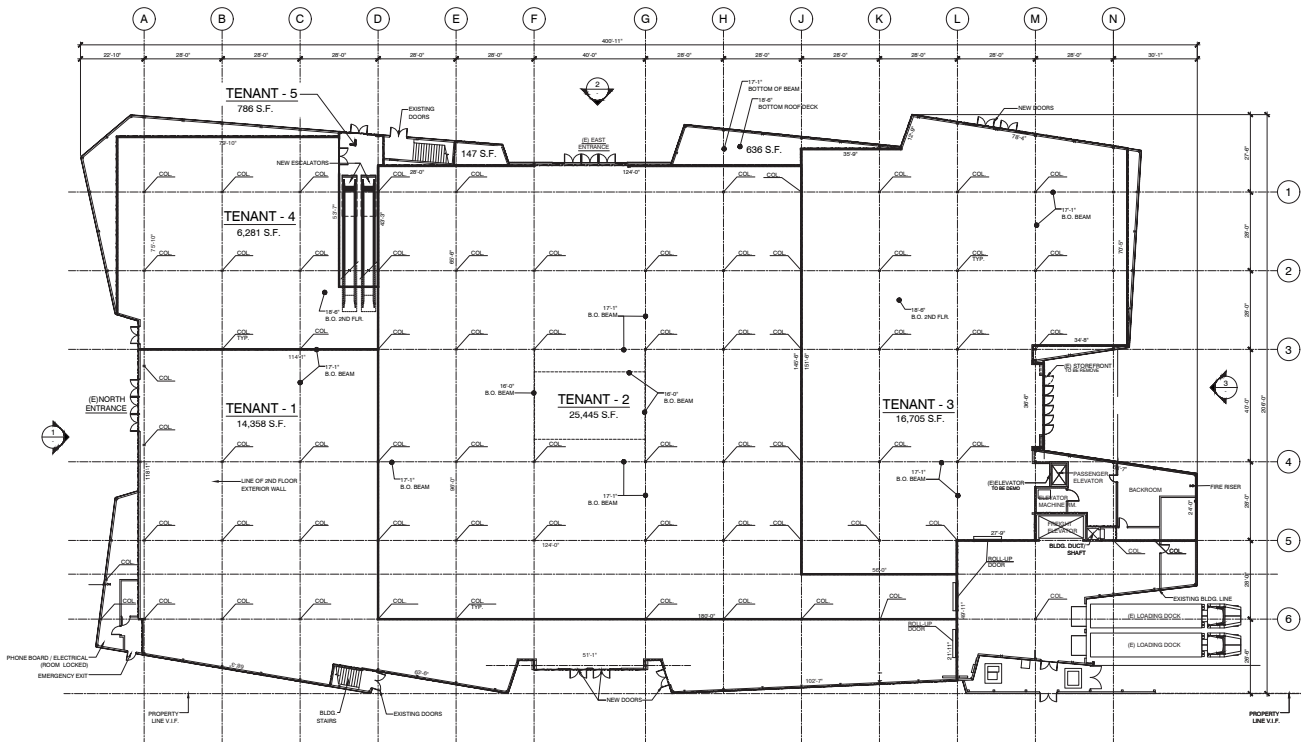
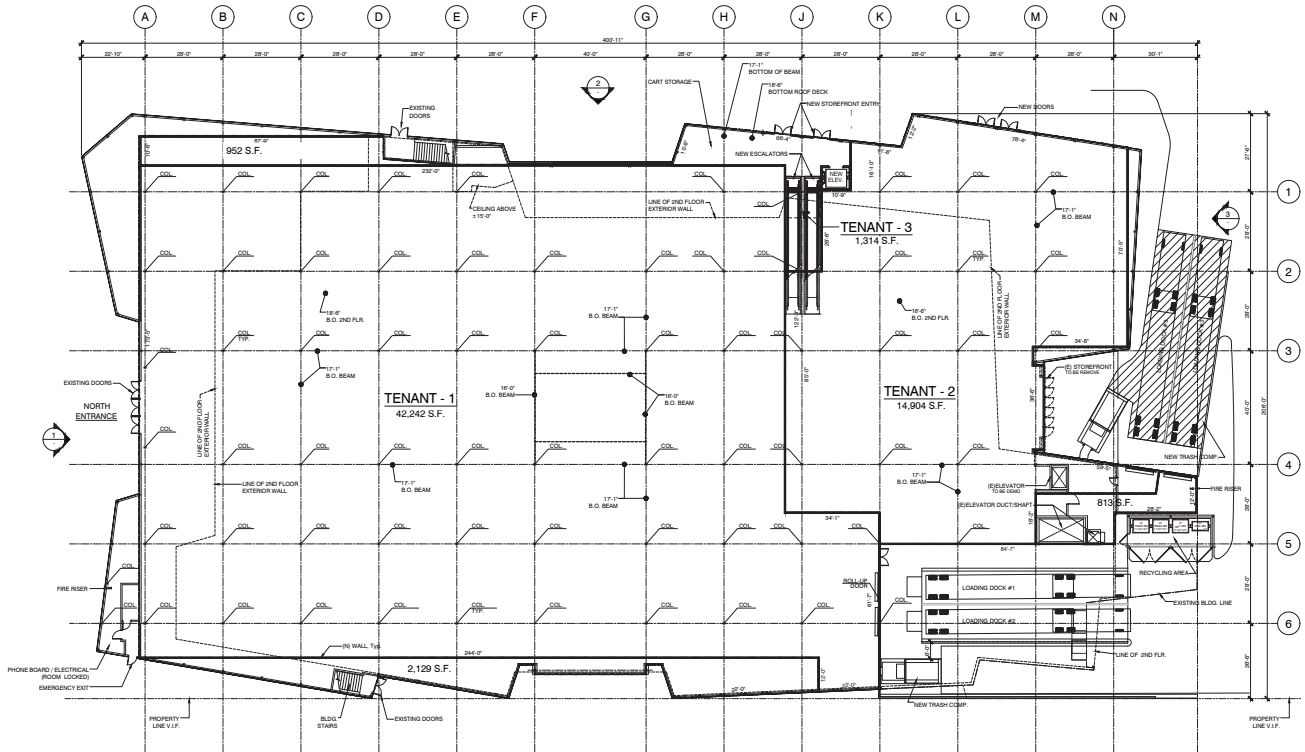
SECOND FLOOR - 50,377 SF



The information above has been obtained from sources believed to be reliable. While we do not doubt its accuracy, we have not verified it and make no guarantee, warranty or representation about it. It is your responsibility to independently confirm its accuracy and completeness. Any projections, opinions, assumptions or estimates used are for example only and do not represent the current or future performance of the property.



FIRST FLOOR LEASE PLANS



The information above has been obtained from sources believed to be reliable. While we do not doubt its accuracy, we have not verified it and make no guarantee, warranty or representation about it. It is your responsibility to independently confirm its accuracy and completeness. Any projections, opinions, assumptions or estimates used are for example only and do not represent the current or future performance of the property.

291 FLETCHER PKWY, EL CAJON, CA 92020



POPULATION

	1 mile	3 miles	5 miles
Total Population	24,644	168,635	348,439
Projected Population (2029)	24,767	167,795	345,861



HOUSING

	1 mile	3 miles	5 miles
Total Households	8,781	58,334	126,295
Projected Total Households (2029)	8,966	59,084	127,655



INCOME

Median Household Income	\$64,737	\$79,361	\$93,842
Average Household Income	\$87,361	\$110,119	\$124,778
Per Capita Income	\$31,103	\$38,292	\$45,279
Median Disposable Income	\$53,478	\$63,709	\$76,127
Average Disposable Income	\$67,627	\$81,153	\$90,262



DAYTIME DEMOS

Total Daytime Population	32,387	160,716	304,312
Daytime Population Workers	19,322	70,005	122,933
Daytime Population Residents	13,065	90,711	181,379



RACE & ETHNICITY

White	11,271 45.73%	97,455 57.79%	213,046 61.14%
Black or African American	2,457 9.97%	10,324 6.12%	18,378 5.27%
American Indian & Alaska Native Population	331 1.34%	1,816 1.08%	3,405 0.98%
Asian Population	1,345 5.46%	8,682 5.15%	18,313 5.26%
Pacific Islander Population	147 0.60%	846 0.50%	1,768 0.51%
Other Race Population	4,897 19.87%	23,962 14.21%	39,588 11.36%
Population of Two or More Races	4,197 17.03%	25,550 15.15%	53,941 15.48%
Hispanic Population	9,419 38.22%	50,836 30.15%	94,491 27.12%
Non-Hispanic Population	15,225 61.78%	117,799 69.85%	253,948 72.88%



EDUCATION

Bachelor's Degree	2,429 15.15%	23,351 20.28%	55,208 22.58%
Graduate/Professional Degree	1,061 6.62%	10,544 9.16%	29,773 12.18%



AGE

Median Age	33.7	37.7	39.3
------------	------	------	------



Former Macy's and Freestanding Pads El Cajon, CA

Ron Pepper
858.523.2085
rpepper@retailinsite.net
lic. 00865929

Mike Moser
858.523.2089
mike.moser@retailinsite.net
lic. 00977876

Retail Insite
Commercial Real Estate

405 S. Hwy 101, Ste 150
Solana Beach, CA 92075

lic. 01206760

t. 858 523 2090

w. retailinsite.net