



The Lindley

SAN DIEGO / CALIFORNIA



About The Lindley

C O L U M B I A D I S T R I C T / S A N D I E G O

Located in the heart of Downtown San Diego, situated between Little Italy and The Embarcadero, The Columbia District is a core component of the downtown landscape. Home to a healthy mix of high-rise office towers, vibrant retail/restaurants and an elevated residential demographic; it is no surprise The Columbia District is one of the most dynamic pockets of San Diego.

P R O P E R T Y H I G H L I G H T S

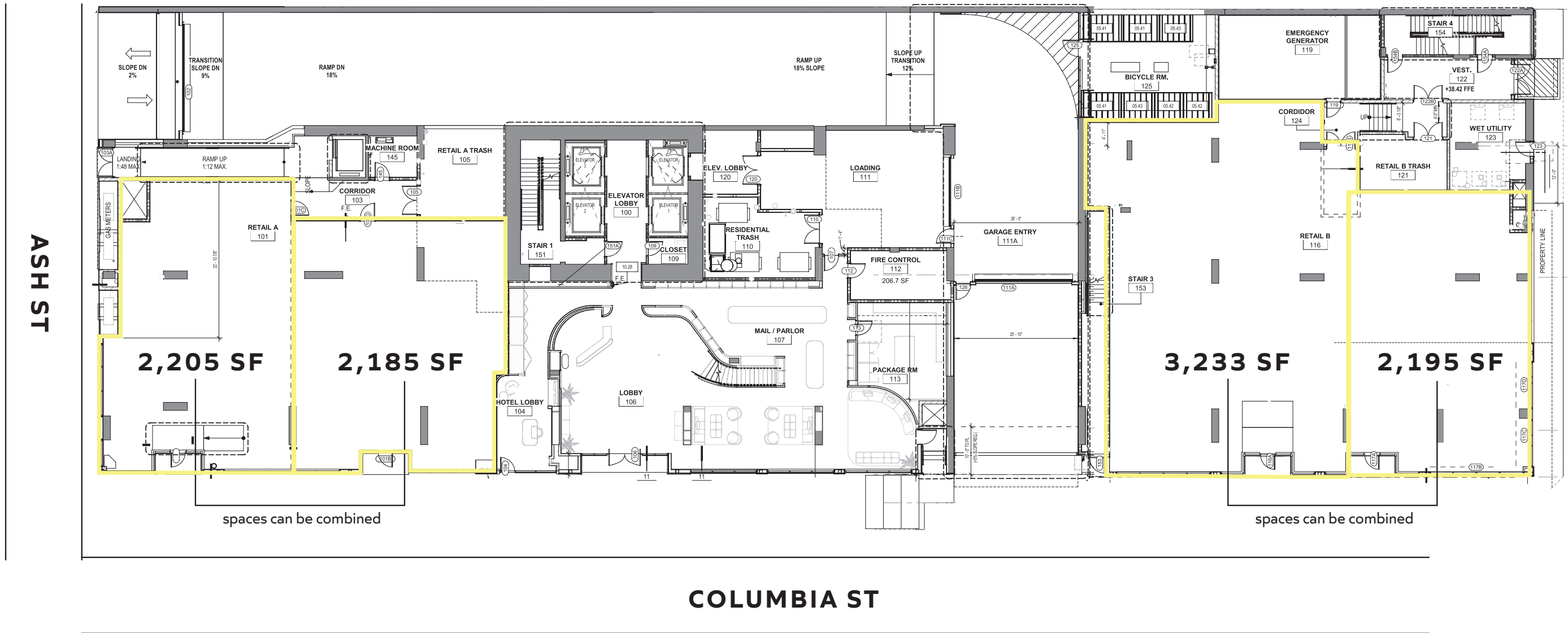
- Approximately 9,818 SF retail/restaurant space
- Parking options
- Situated in the core of downtown San Diego
- Offers great proximity to Little Italy and The Embarcadero
- Unique opportunity for locally sourced retailers and restaurateurs
- The Lindley will deliver a high quality and elevated experience



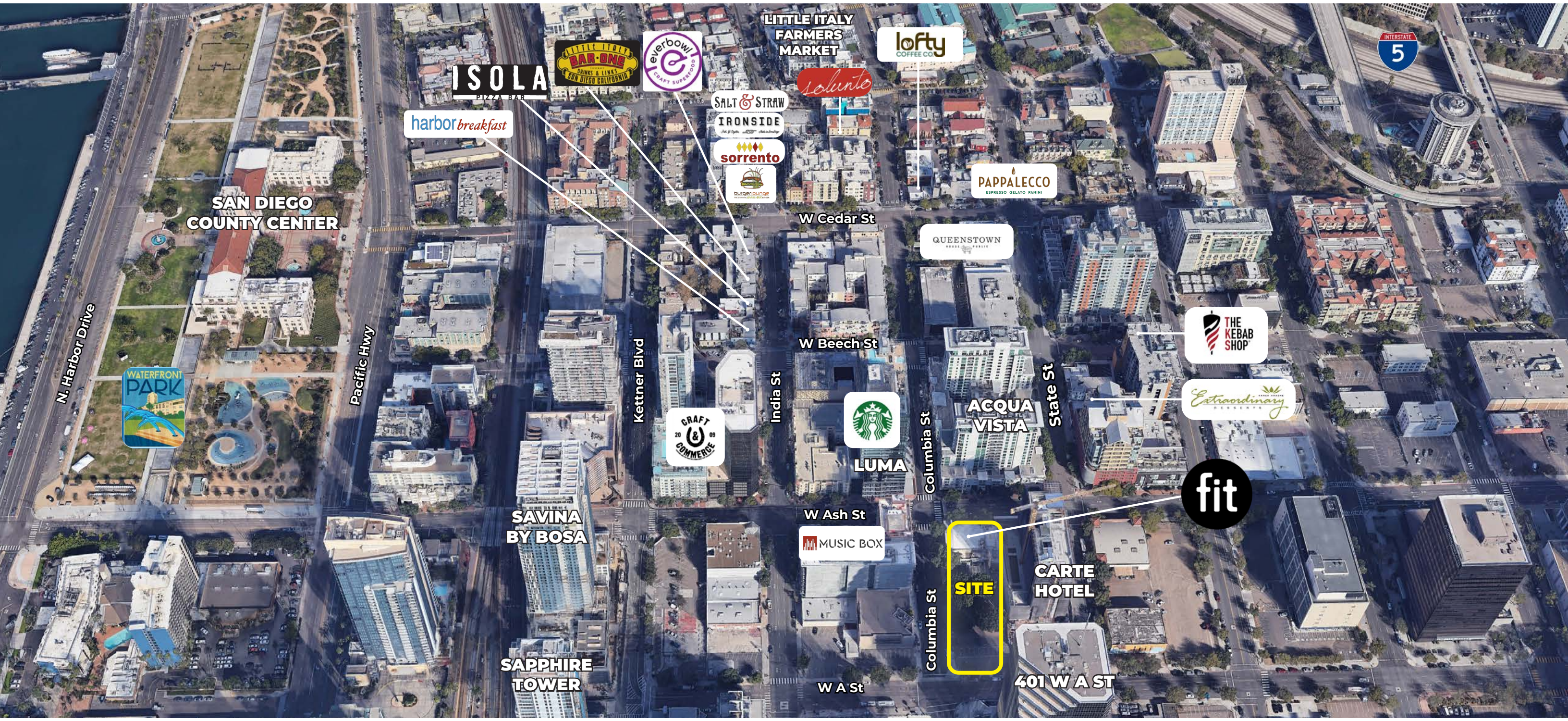
Site Plan.



THE LINDLEY
SAN DIEGO



Neighborhood Aerial



Trade Area Aerial



Meet the Neighbors

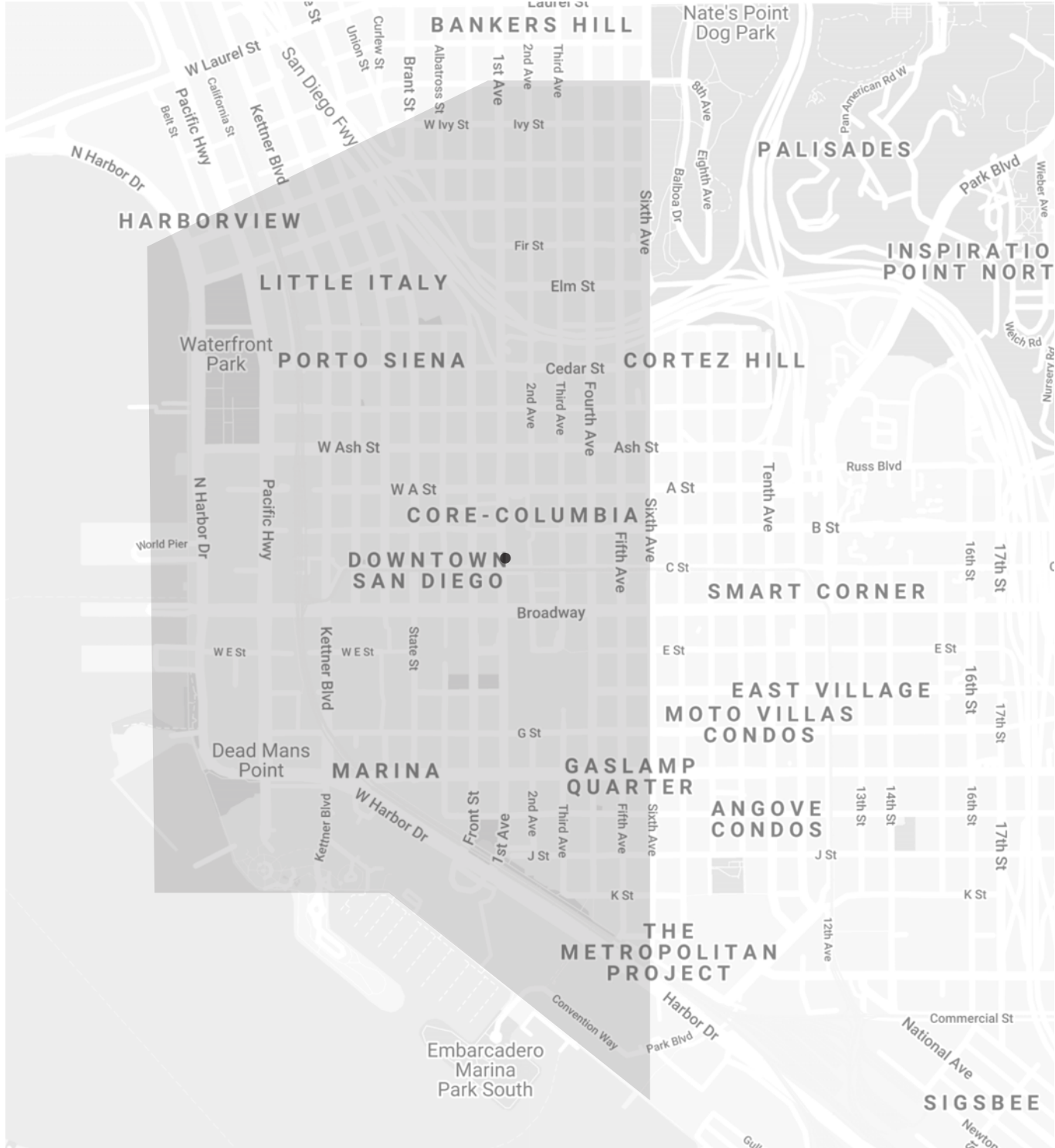
4 min
WALK TO
LITTLE ITALY

8 min
WALK TO
WATERFRONT PARK



SAN DIEGO / CALIFORNIA

Area Demographics.



SAN DIEGO / CALIFORNIA

Population

Estimated Population	23,709
Forecasted Population (2027)	27,192

Daytime Demos

Total Daytime Population	62,934
--------------------------	--------

Median Household Income

Estimated Median Household Income	\$102,337
Median Disposable Income	\$80,539

Avg Household Income

Estimated Average Household Income	\$142,559
Average Disposable Income	\$96,463

Columbia & Ash

SAN DIEGO / CALIFORNIA



Retail
Space
Available.

Matt Moser

858.523.2096
mmoser@retailinsite.net

Chris Hodgman

858.523.2098
chodgman@retailinsite.net

Connor Stevens

858.369.6458
cstevens@retailinsite.net



RETAIL INSITE