

For Lease • 520 E San Ysidro Blvd

SAN DIEGO, CA 92173



FEATURES

- Approximately 6,180 SF
- Adding an approximately 400 SF kiosk and an approximately 3,470 SF building
- Busy hard corner location in the heart of San Ysidro trade area
- Heavy pedestrian border traffic, over 50,000 crossings per day

DEMOGRAPHICS

	1 Mile	3 Mile	5 Mile
2016 Proj Pop:	8,990	79,553	195,769
Daytime Pop:	4,362	15,759	37,321
Avg HH Income:	\$46,600	\$60,248	\$63,124

RI RETAIL INSITE

A MEMBER OF
CHAINLINKS
RETAIL ADVISORS

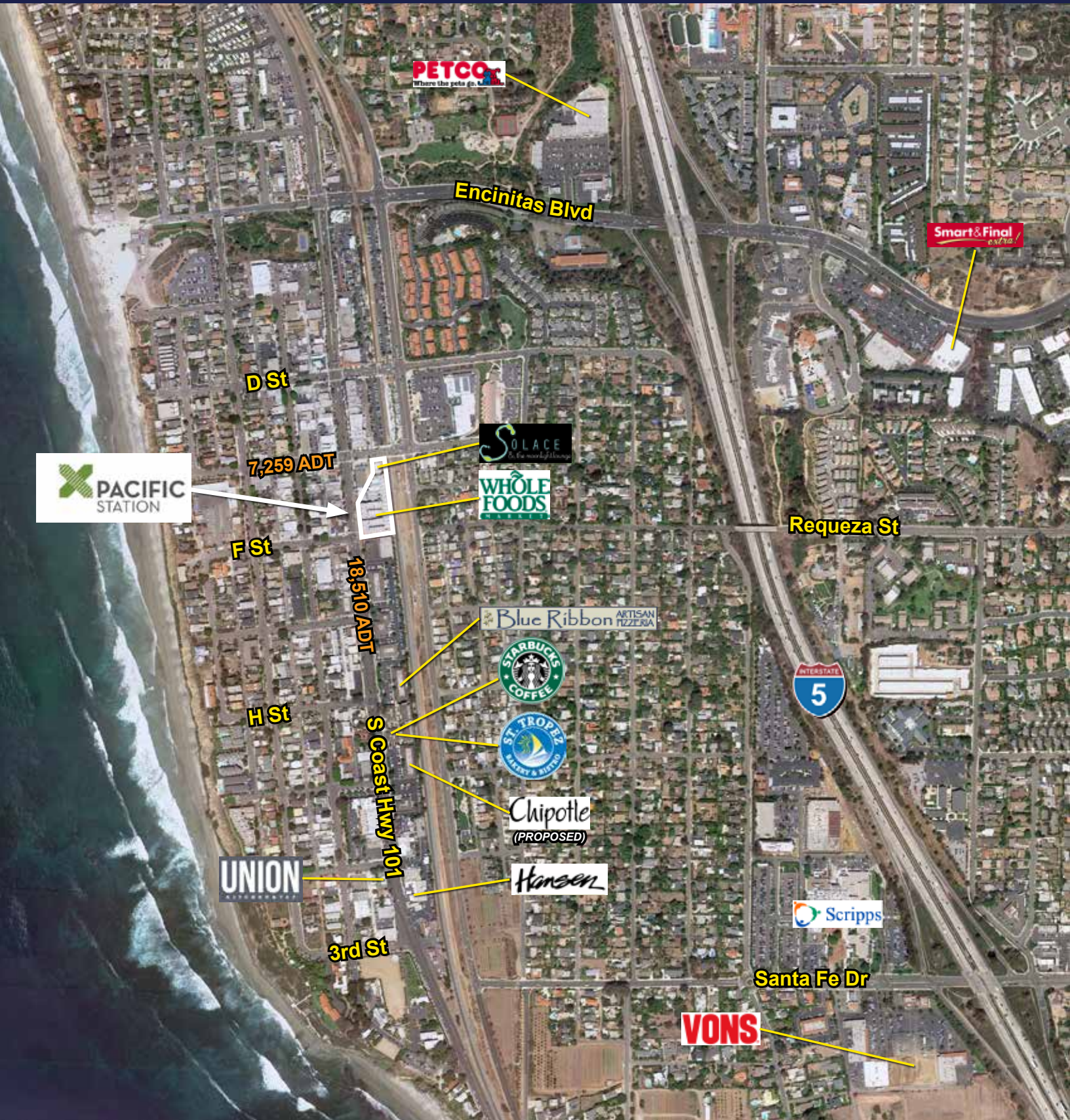
CHRIS HODGMAN • Lic.# 01881298 • 858.523.2098 • chodgman@retailinsite.net

JEFF DREW • Lic.# 00993435 • 858.523.2091 • jdrew@retailinsite.net

12264 EL CAMINO REAL STE. 202 SAN DIEGO, CA 92130 • LIC # 01206760 T: 858 523 2090 • RETAILINSITE.NET

For Lease · 520 E San Ysidro Blvd

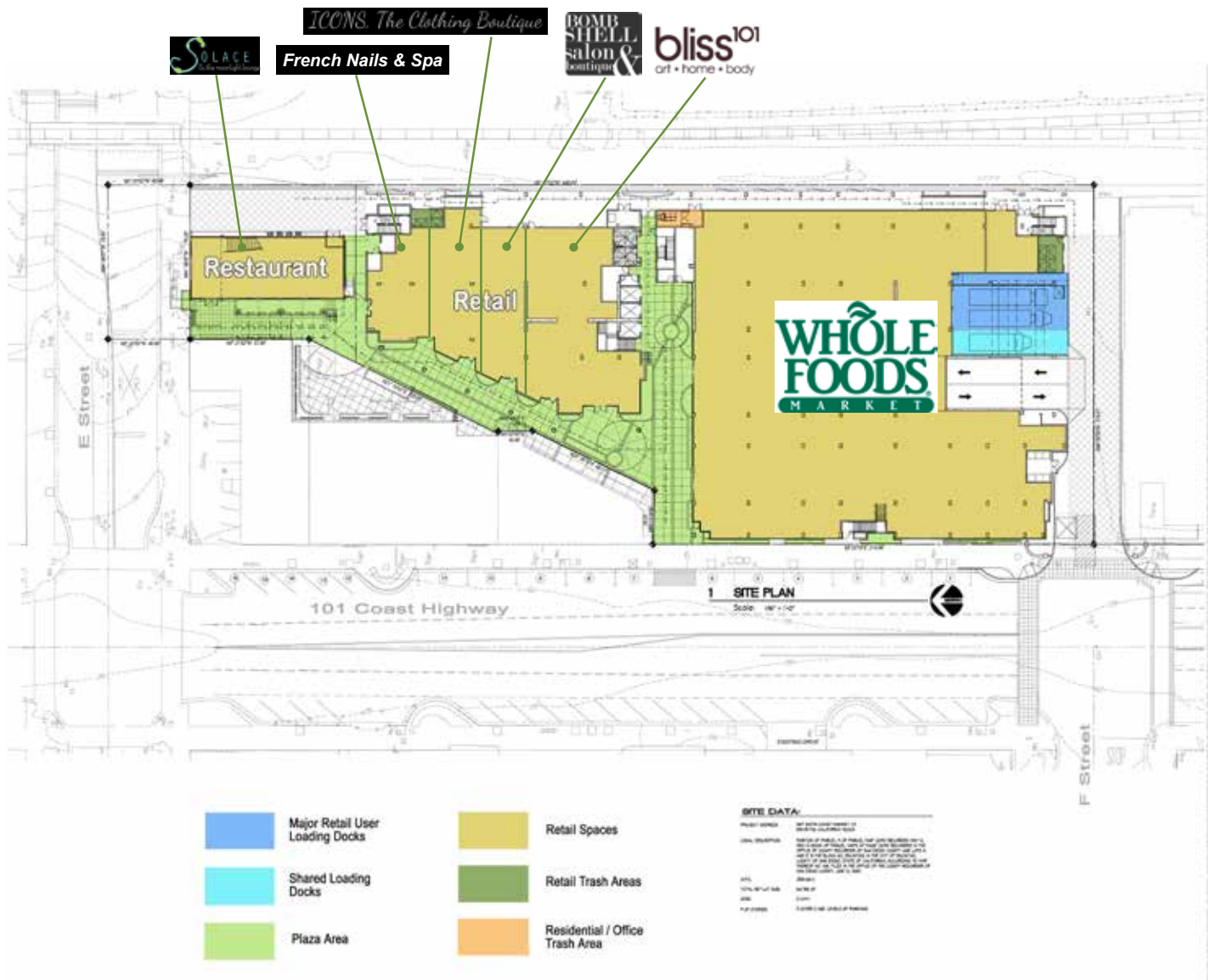
SAN DIEGO, CA 92173



For Lease · 520 E San Ysidro Blvd

SAN DIEGO, CA 92173

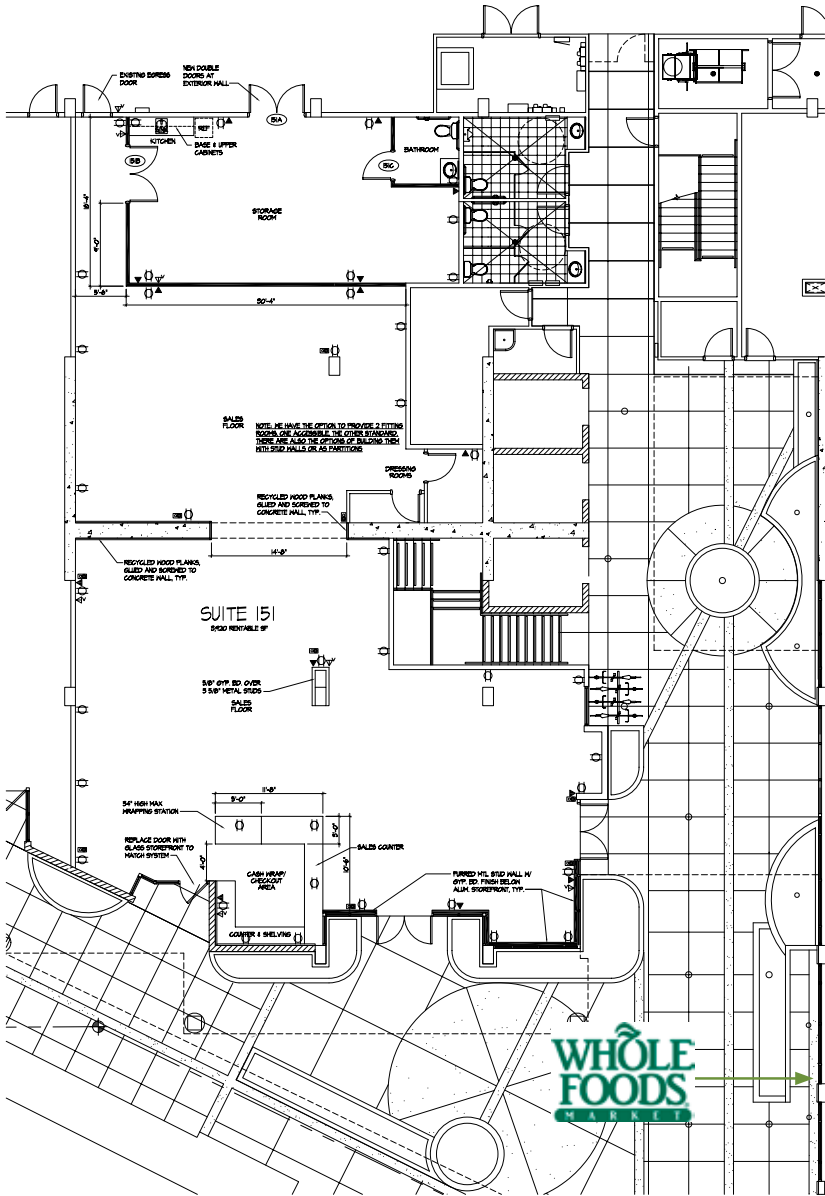
SITE PLAN

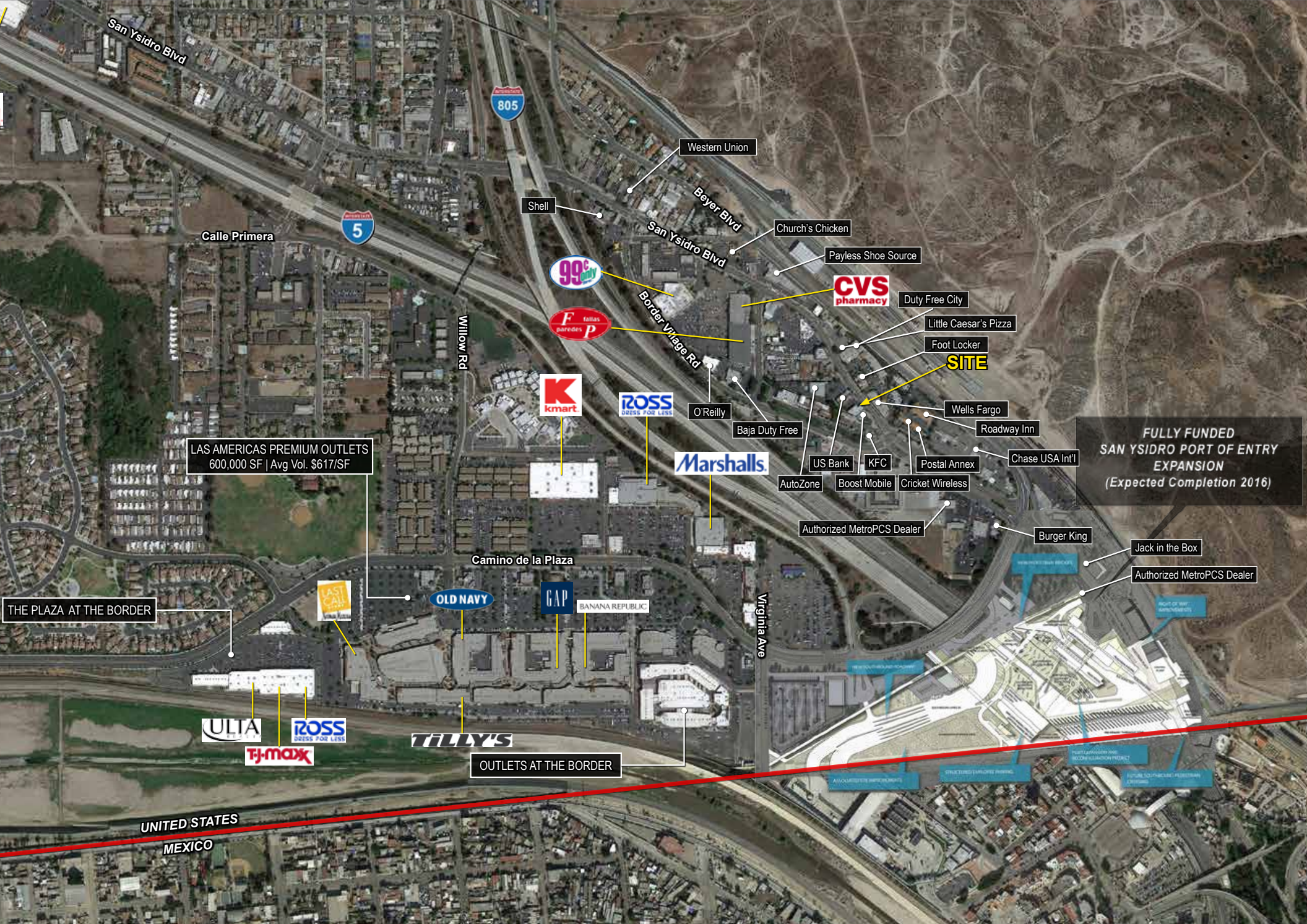


For Lease · 520 E San Ysidro Blvd

SAN DIEGO, CA 92173

FLOOR PLAN





LAS AMERICAS PREMIUM OUTLETS
600,000 SF | Avg Vol. \$617/SF

FULLY FUNDED
SAN YSIDRO PORT OF ENTRY
EXPANSION
(Expected Completion 2016)

OUTLETS AT THE BORDER

Expanded Demographic Profile

ESTIMATED 2017 · CALCULATED USING PROPORTIONAL BLOCK GROUPS

520 E SAN YSIDRO BLVD | SAN DIEGO, CA



POPULATION

	1 MILE	3 MILES	5 MILES
Estimated Population	21,149	104,164	236,440
Forecasted Population (2021)	22,219	112,732	263,607



HOUSEHOLDS

Households	5,404	26,265	65,684
------------	-------	--------	--------



AVG HHD INCOME

Estimated Avg Household Income	\$64,166	\$70,718	\$74,457
Avg Family Income	\$59,633	\$64,269	\$69,558



MEDIAN HH INCOME

Estimated Median Household Income	\$41,960	\$57,257	\$59,612
Median Family Income	\$42,802	\$57,160	\$60,942



PER CAPITA INCOME

Est. Proj. Per Capita Income	\$16,476	\$19,012	\$21,519
------------------------------	----------	----------	----------



OTHER INCOME

Est. Proj. Median Disposable Income	\$36,229	\$47,435	\$49,079
-------------------------------------	----------	----------	----------



DAYTIME DEMOS

Total Number of Businesses	461	1,756	4,527
Total Number of Employees	4,802	17,425	42,244



RACE & ETHNICITY

	1 MILE	3 MILES	5 MILES
White	11,656 57.6%	50,254 51.2%	117,321 53.3%
Black or African American	310 1.5%	4,020 4.1%	9,312 4.2%
American Indian & Alaskan Native	154 0.8%	670 0.7%	1,700 0.8%
Asian	526 2.6%	9,589 9.8%	21,952 10.0%
Hawaiian & Pacific Islander	56 0.3%	424 0.4%	1,188 0.5%
Other Race	6,820 33.7%	28,924 29.5%	57,296 26.0%
Two or More Races	729 3.6%	4,178 4.3%	11,488 5.2%



AGE DISTRIBUTION

Median Age	33.29 yrs	33.72 yrs	33.78 yrs
------------	-----------	-----------	-----------



HOUSING

Total Housing Units	5,410	26,019	64,715
---------------------	-------	--------	--------